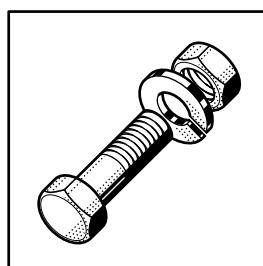




GX / FX

Spare Parts
Pièces Détachées
Ersatzteile
Onderdelen



Electrical components listed in this catalogue are rated for the following supply voltages:

Les composants électriques énumérés dans ce catalogue sont prévus pour les tensions suivantes:

Die in diesem Katalog aufgeführten Elektroteile beziehen sich auf folgende Anschlußspannungen:

De in deze catalogus afgebeelde elektrische componenten zijn geschikt voor de volgende aansluitspanningen:

230V / 50Hz / 1 / N / PE

220V / 50Hz / 3 / N / PE

240V / 50Hz / 1 / N / PE

240V / 50Hz / 3 / N / PE

400V / 50Hz / 3 / N / PE

415V / 50Hz / 3 / N / PE

For other voltages, refer to the wiring diagram shipped with the machine.

Pour d'autres tensions, se référer au schéma électrique envoyé avec la machine.

Bei nicht aufgeführten Anschlußspannungen bitte den, der Maschine beigelegten, Schaltplan beachten.

Voor eventueel andere aansluitspanningen, raadpleeg het elektrische schema welke zich bij de machine bevind.

Contents

| | |
|--|----|
| Panels | 4 |
| Frame and tracks | 5 |
| Tank and door | 6 |
| Filters and tankheating | 7 |
| Booster | 8 |
| Wash pump | 12 |
| Rinse pump | 13 |
| Wash and rinse system | 14 |
| Fill, anti-siphon-device and drain | 18 |
| Break tank | 19 |
| Softener | 20 |
| Fill and regeneration pipework | 21 |
| Fill | 22 |
| Lower rack | 26 |
| Upper rack | 27 |
| Dispensers | 28 |
| Front base | 30 |
| Control panel | 31 |
| Electrical parts | 34 |
| Extension and support | 36 |

Inhalt

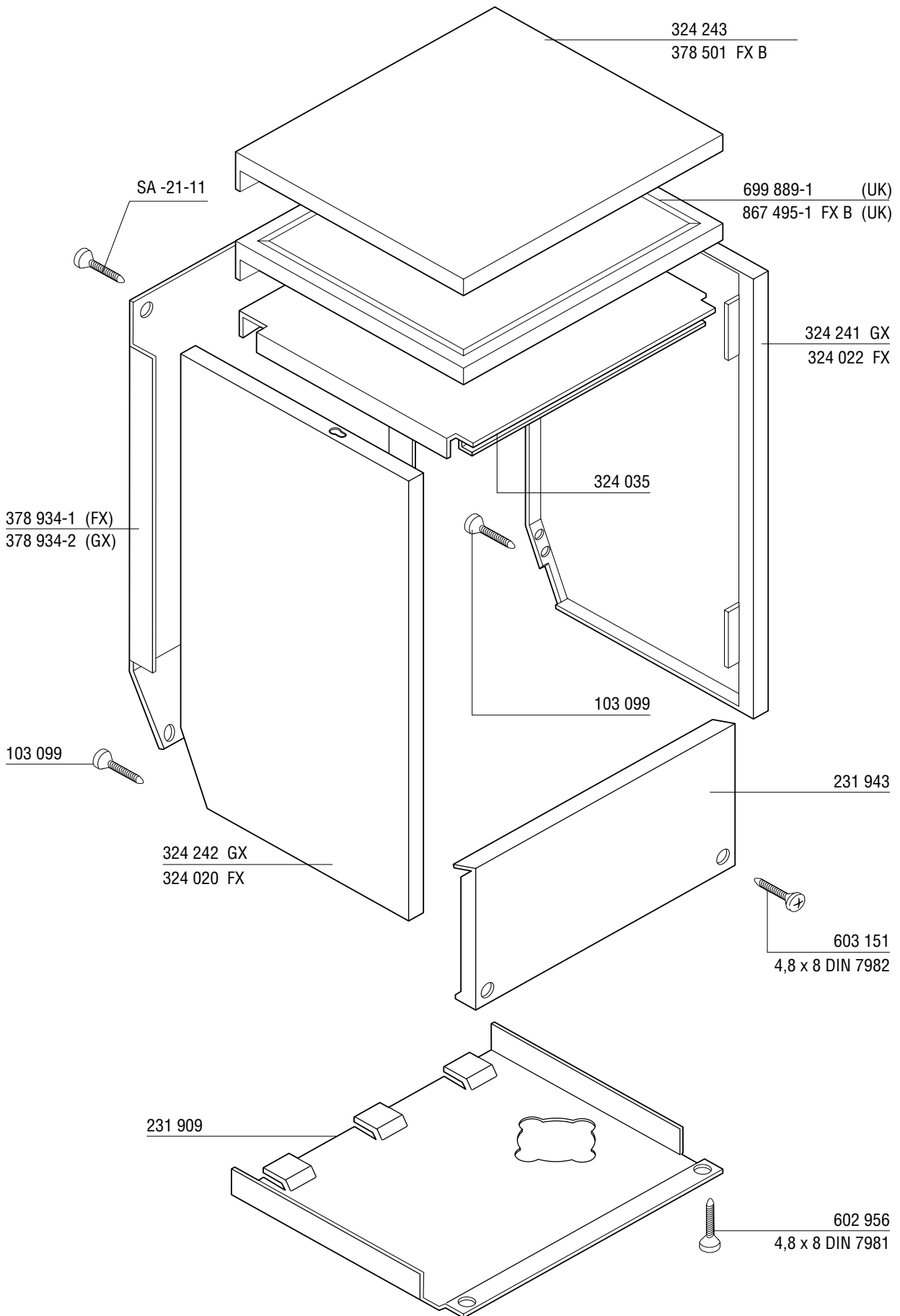
| | |
|---|----|
| Verkleidungen | 4 |
| Gestell und Laufschiene | 5 |
| Tank und Tür | 6 |
| Siebe und Tankheizung | 7 |
| Erhitzer | 8 |
| Waschpumpe | 12 |
| Klarspülpumpe | 13 |
| Wasch- und Klarspülsystem | 14 |
| Füllung, Rücksaugverhinderer und Ablauf | 18 |
| Wassertank mit Drucksteigerungspumpe | 19 |
| Enthärter | 20 |
| Füll- und Regenerierleitung | 21 |
| Füllung | 22 |
| Unterer Korb | 26 |
| Oberer Korb | 27 |
| Dosiergeräte | 28 |
| Untere Frontverkleidung | 30 |
| Schalterblende | 31 |
| Elektroteile | 34 |
| Sockel und Untergestell | 36 |

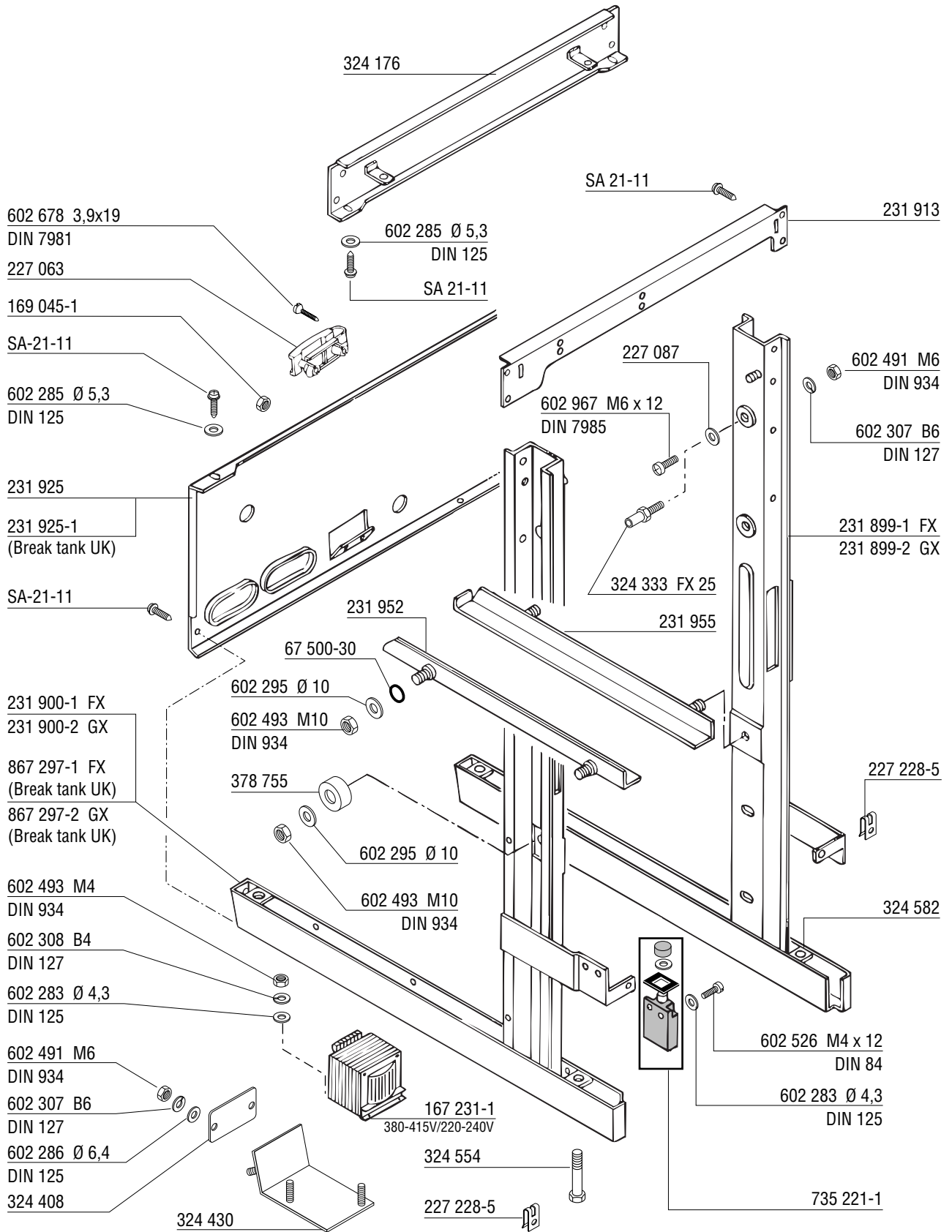
Sommaire

| | |
|---|----|
| Panneaux | 4 |
| Châssis et rails | 5 |
| Bac et porte | 6 |
| Filtres et chauffage du bac | 7 |
| Chaudière | 8 |
| Pompe de lavage | 12 |
| Pompe de rinçage | 13 |
| Système de lavage et de rinçage | 14 |
| Remplissage, brise-vidé et vidange | 18 |
| Réservoir avec pompe de surpression | 19 |
| Adoucisseur | 20 |
| Tuyauterie de remplissage | 21 |
| Remplissage | 22 |
| Casier inférieur | 26 |
| Casier supérieur | 27 |
| Doseurs | 28 |
| Panneau frontal inférieur | 30 |
| Panneau de commande | 31 |
| Pièces électriques | 34 |
| Socle et bâti inférieur | 36 |

Inhoud

| | |
|--|----|
| Panelen | 4 |
| Frame en rekkenrails | 5 |
| Tank en deur | 6 |
| Zeven en tankverwarming | 7 |
| Booster | 8 |
| Waspomp | 12 |
| Spoelpomp | 13 |
| Was- en spoelsysteem | 14 |
| Water toevoer, vacuumbreaker en afvoer | 18 |
| Waterreservoir met pomp | 19 |
| Ontharding | 20 |
| Vul- en regeneratieleiding | 21 |
| Vulling | 22 |
| Onderste rekken | 26 |
| Bovenste rekken | 27 |
| Doseerapparaten | 28 |
| Onder front panel | 30 |
| Schakelpaneel en elektrische delen | 31 |
| Elektrische delen | 34 |
| Uitbreiding en onderstel | 36 |





324 106-1 FX 10/20/25/8/15/30/40
20E/25E/30E/40E
20EK/30K/30EK/40K/40EK

324 341 FX 10S/20S/8S/15S/30S/40S
20ES/25ES/30ES/40ES

324 650 FX 20EB/30EB

324 651 FX 20ESB/30ESB

324 323 GX 60/60 K

324 324 GX 60 S

867 294-1 FX S (BREAK TANK UK)

867 294-2 FX SB (BREAK TANK UK)

867 294-3 GX S (BREAK TANK UK)

* = until may 99
jusqu'à mai 99
bis Mai 99
tot mei 99

** = since june 99
depuis juin 99
ab Juni 99
sinds juni 99

172 739-9

168 611-3

324 403-1

886 612

228 693-1

228 694-1

324 002-2

231 937

378 622-1

FX B

Ident.: black / noir /
schwarz / zwart

227 855

139 321-47

139 321-178

139 321-202

139 321-180

324 402-1 GX

324 402-7 FX

FX 10/10S

602 592
M12 x 16 DIN 933

168 611-20

602 494 M12
DIN 934

324 034 FX 20/20S/25/25S
30/30S/30K
40/40S/40K

324 326 FX 20E/20ES/20EK
20EB/20ESB
25E/25ES
30E/30ES/30EK
30EB/30ESB
40E/40ES/40EK
231 981-1 FX / GX *
378 760-6 FX / GX **
378 758-1 FX E

602 481 M12 DIN 439

324 221

886 253-1

228 693-1

228 694-1

324 002-1

603 182

231 937

227 855

603 376 M8 x 16

172 986-10

227 024

602 287 B8 DIN 125

602 492 M8 DIN 934

172 739-5

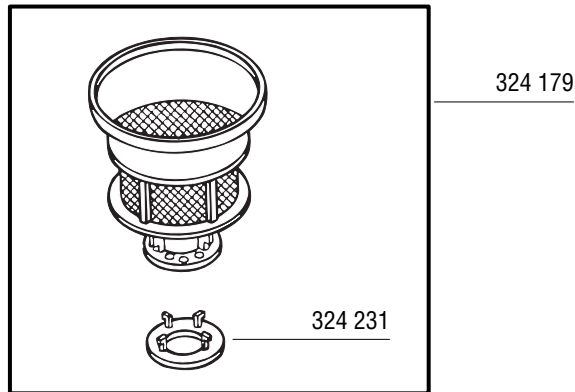
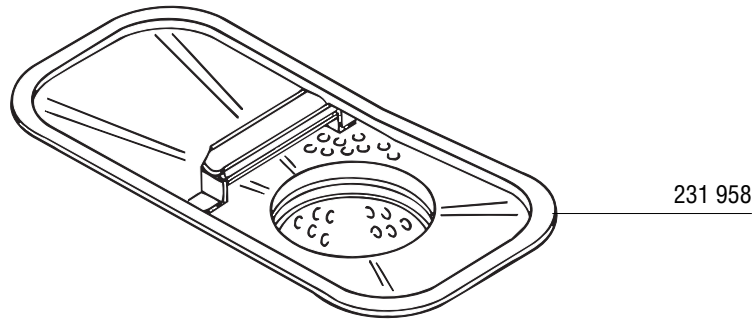
168 611-20

231 908 FX

324 234 GX

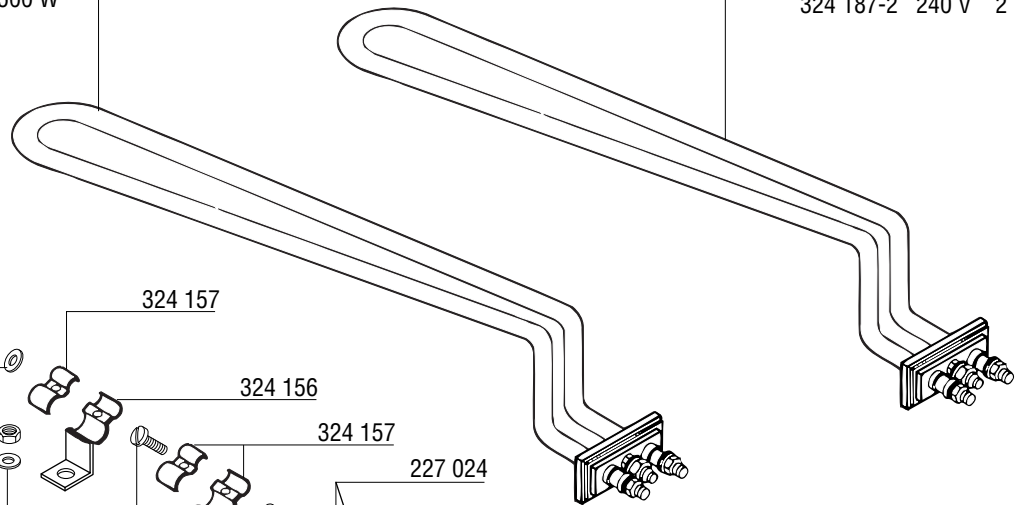
324 652 FX B

378 805 FX 8 / 15



231 982-10 440 V 610 W
 231 982-9 254 V 610 W
 231 982-8 115 V 500 W
 231 982-7 480 V 500 W

324 187-5 440 V 2 700 W
 324 187-4 415 V 2 700 W
 324 187-2 240 V 2 700 W



602 646 M3 x 10
 DIN 84

602 294 B3
 DIN 127

602 489 M4
 DIN 934

602 308 B4
 DIN 127

602 646 M3 x 10
 DIN 84

602 294 B3
 DIN 127

602 488 M3
 DIN 934

324 157

324 156

324 157

227 024

226 505 FX 10/20/8/15/30/40
 GX 60

227 879 FX 20E/25E/30E/40E

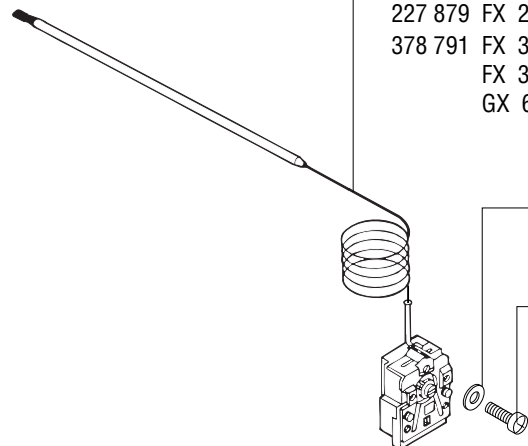
378 791 FX 30K/40K

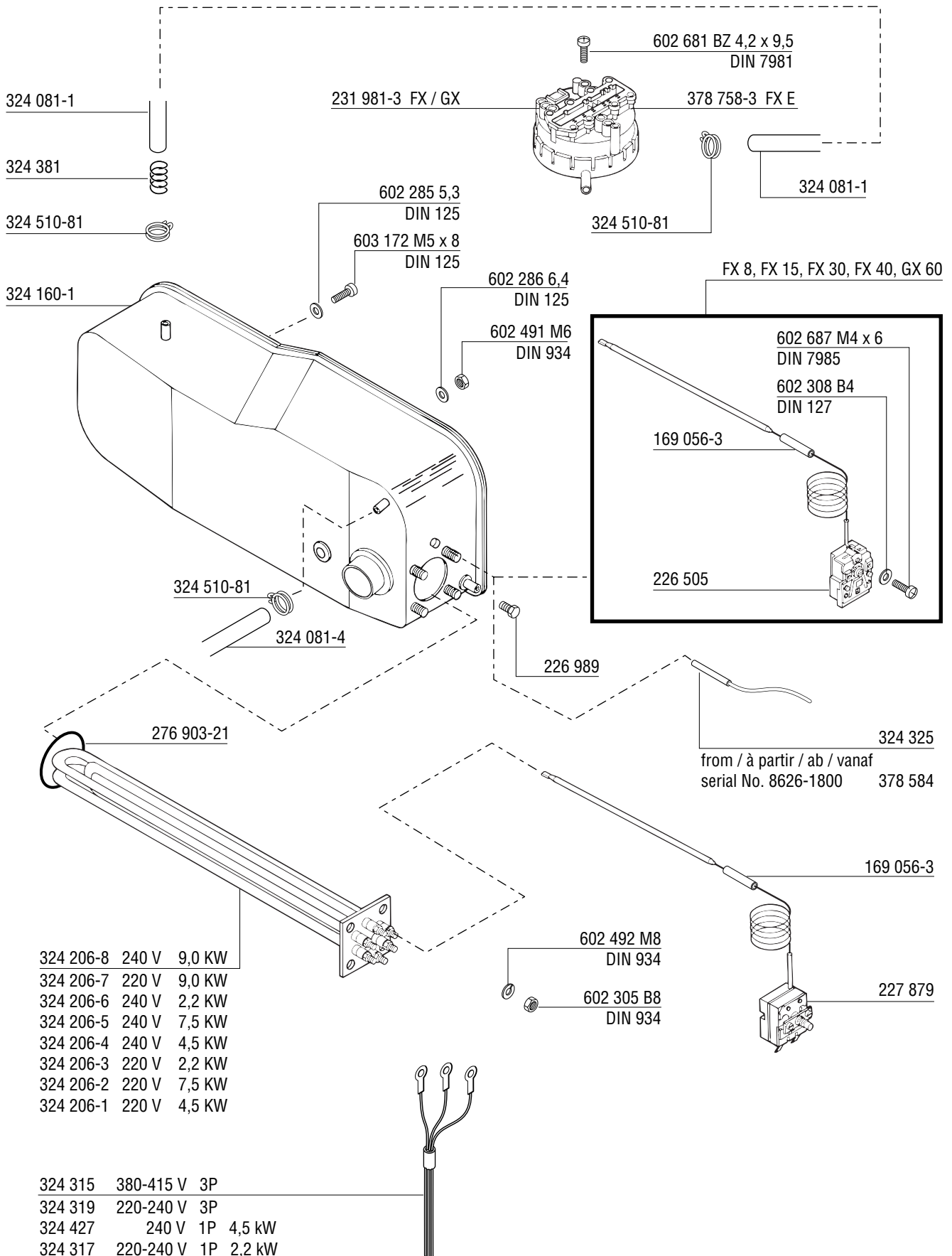
FX 30EK/40EK

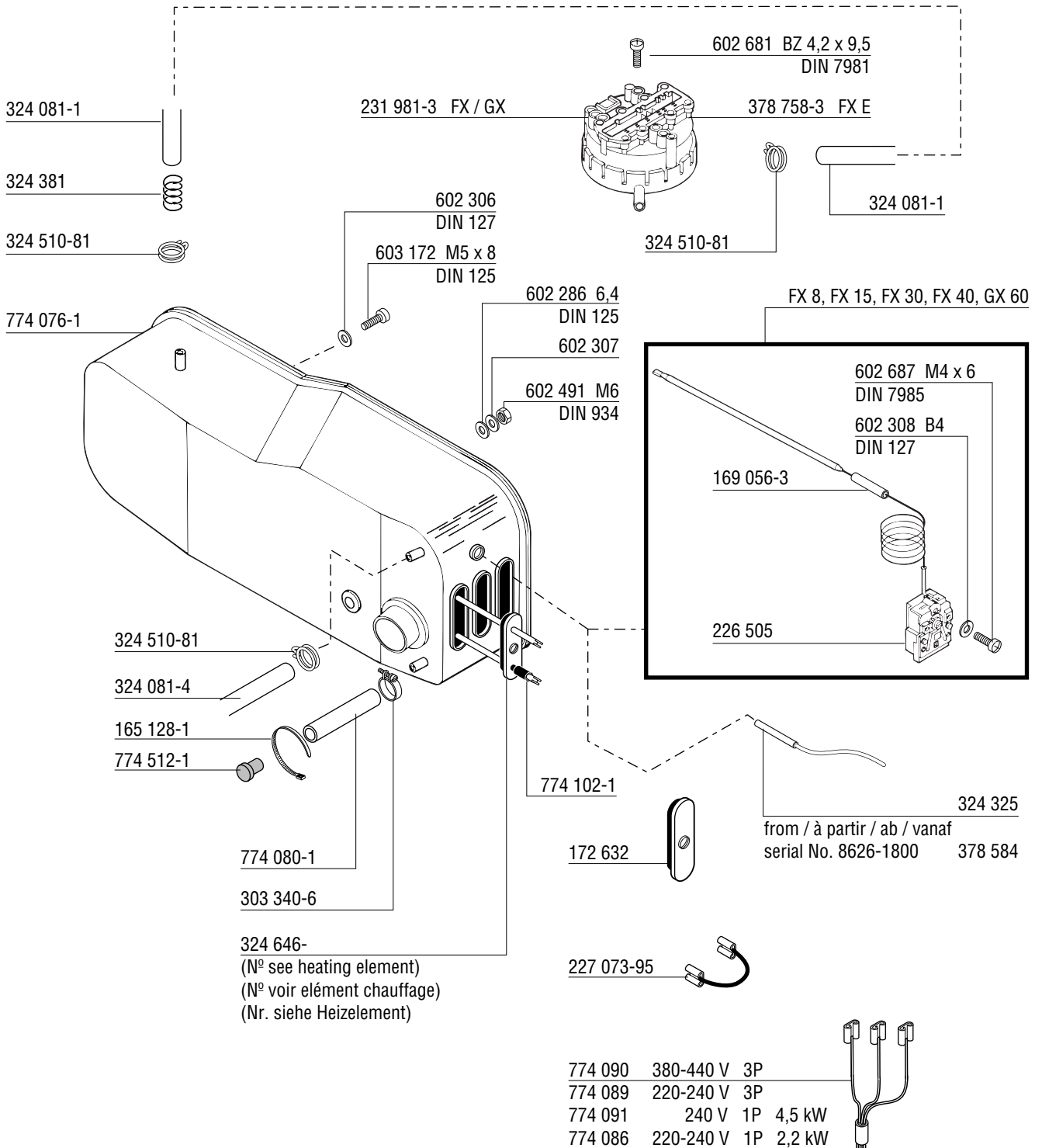
GX 60K

602 308 B4
 DIN 127

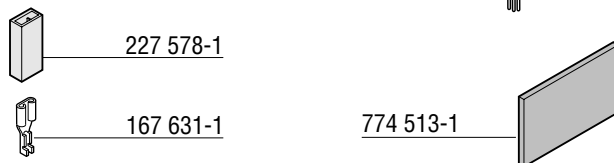
602 687 M4 x 6
 DIN 7985

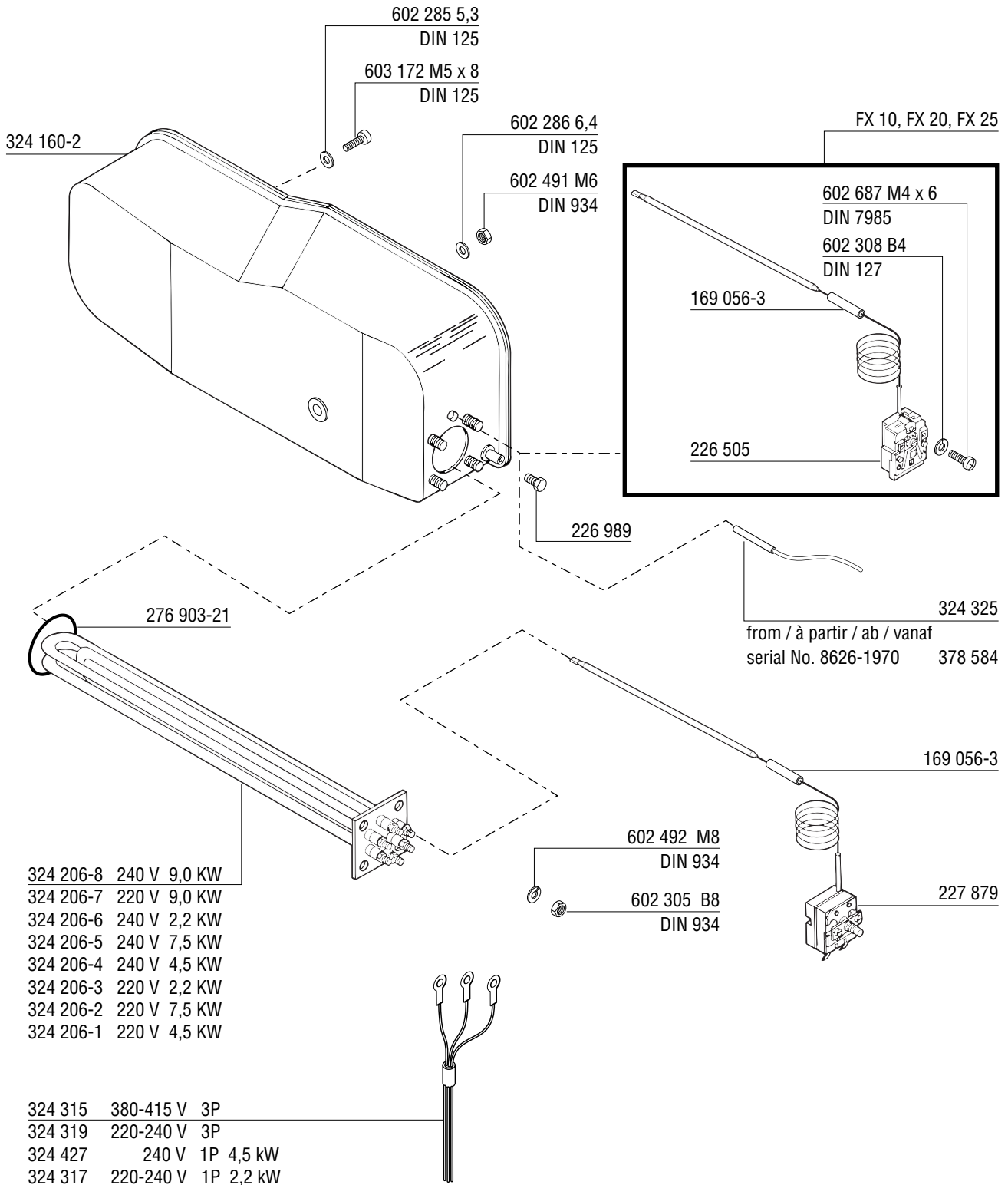


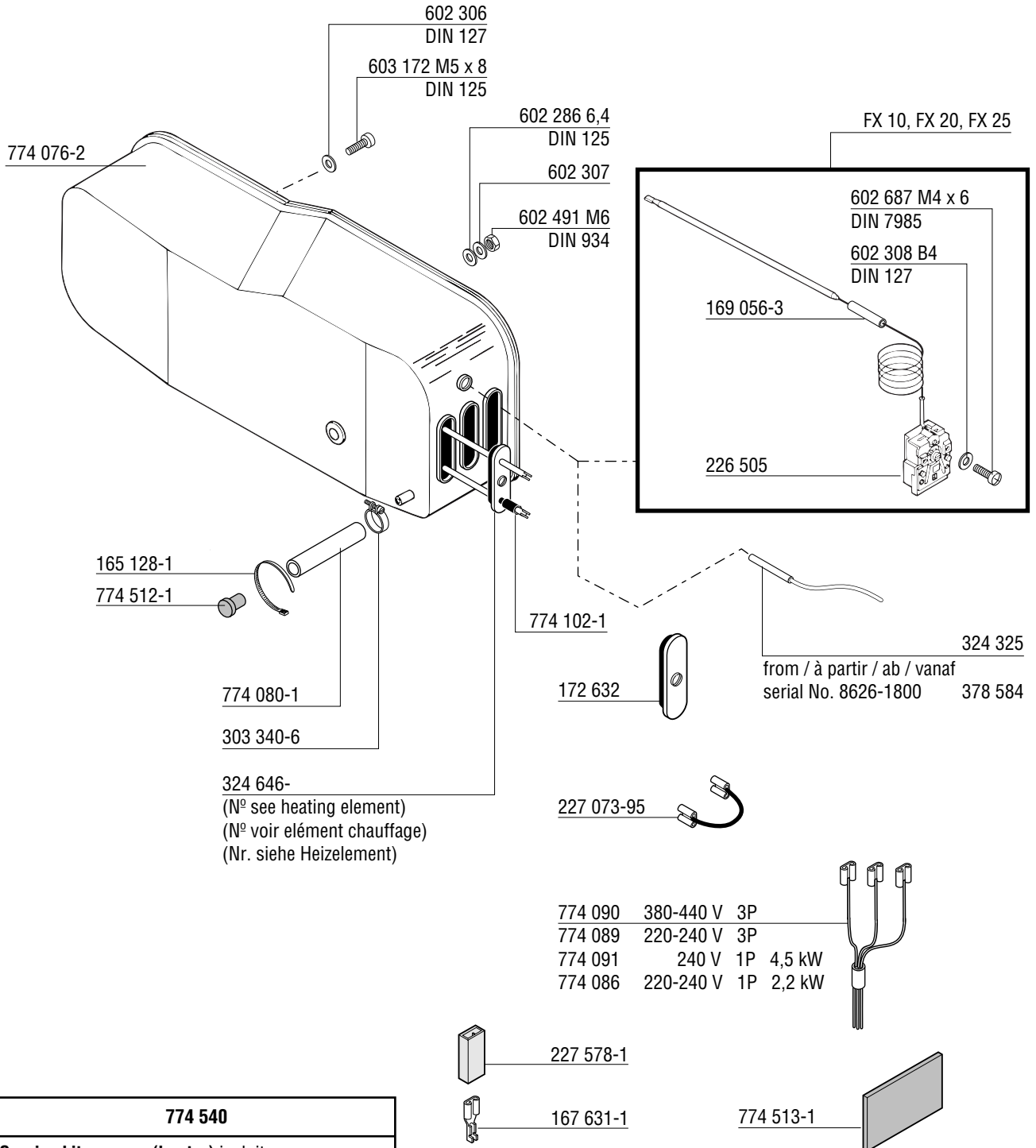




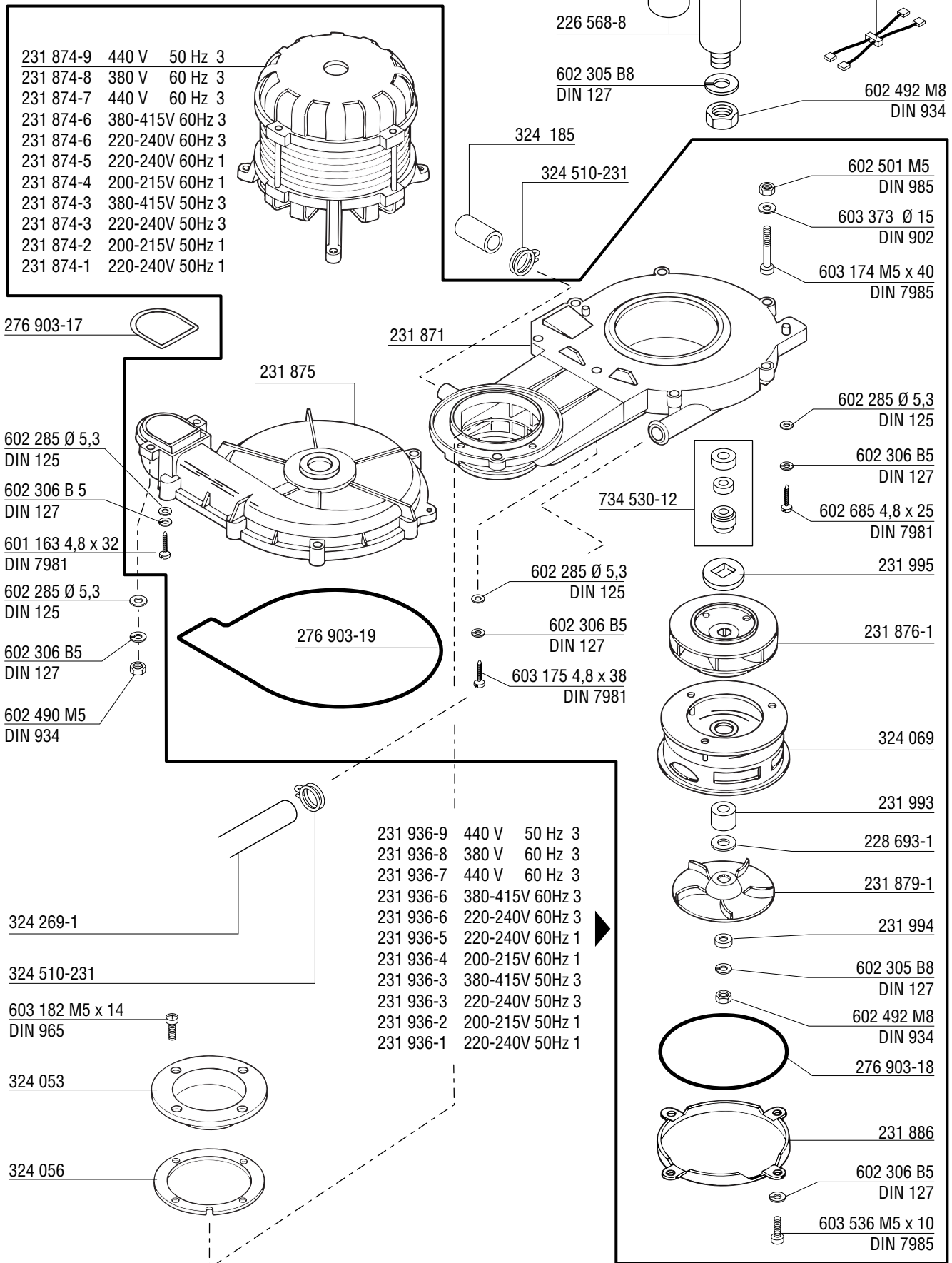
| 774 539 | |
|---|----------------|
| Service kit (heater) incl. items | |
| Composition du kit (chaudière) incl. pièces | |
| Umbausatz (Durchlauferhitzer) inkl. Teile | |
| 227 073-95 | 774 512-1 |
| 774 076-1 | 303 340-6 |
| 774 513-1 | 774 080-1 |
| 774 102-1 (6x) | 227 578-1 (3x) |
| 165 128-1 | 167 631-1 (3x) |

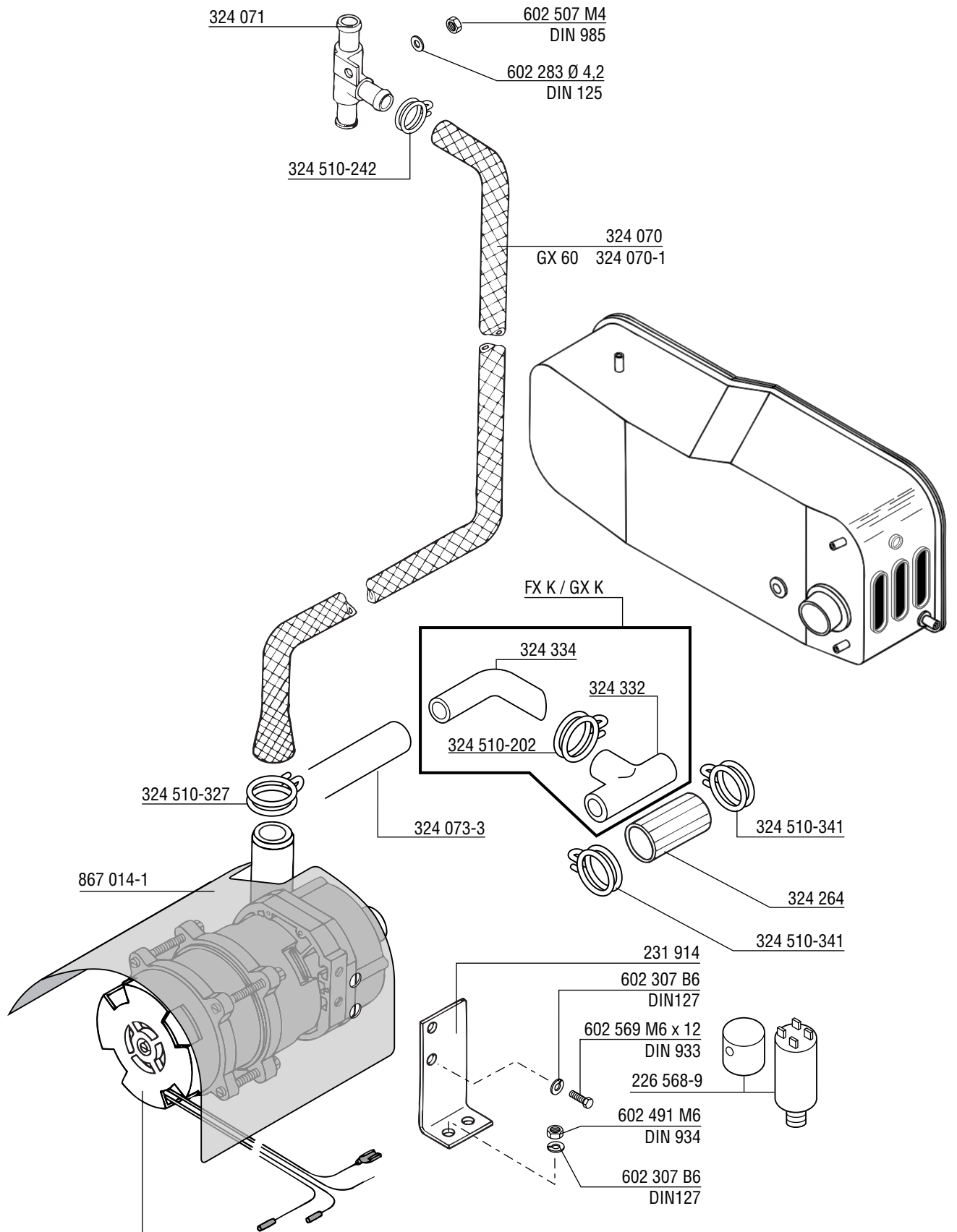




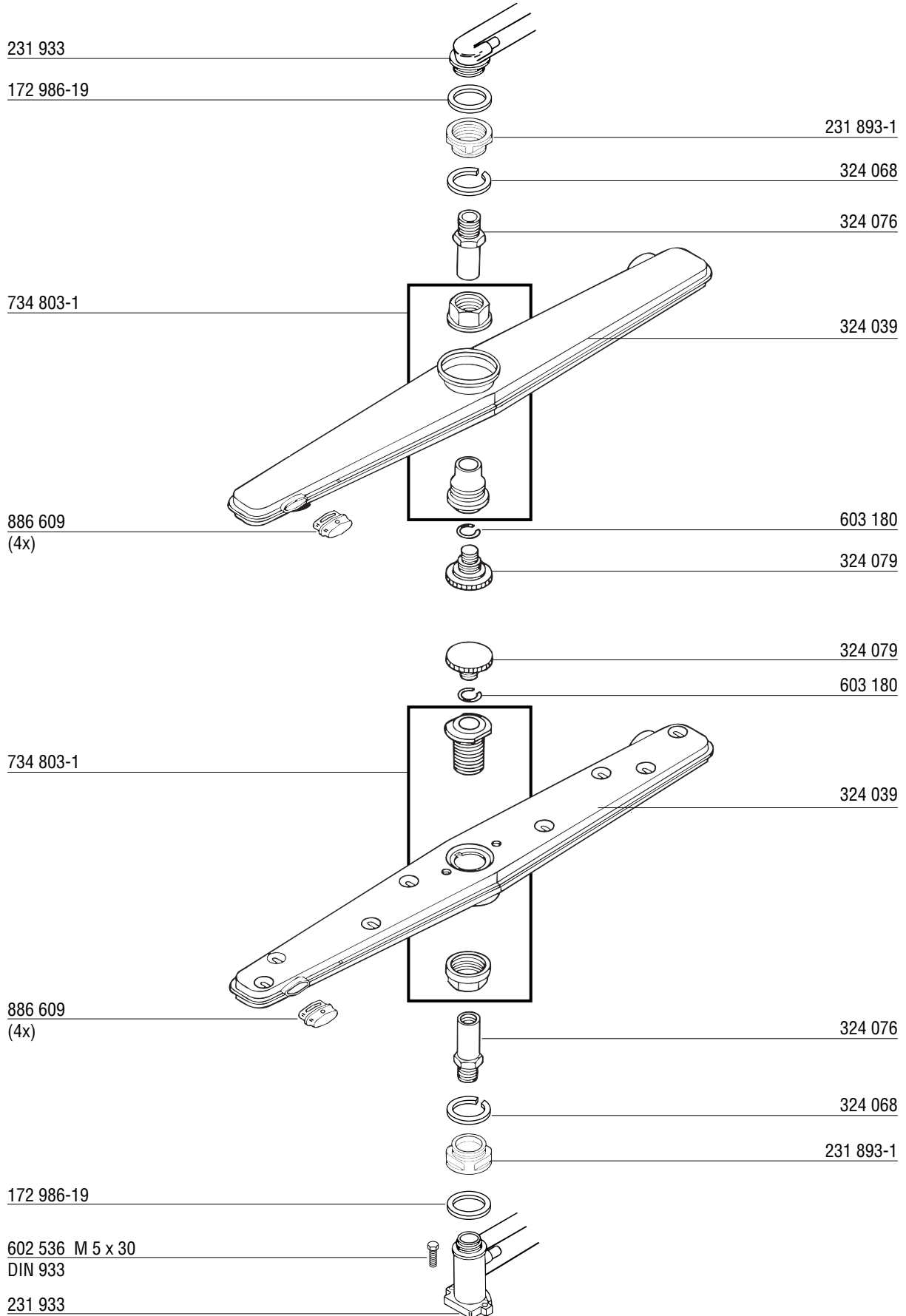


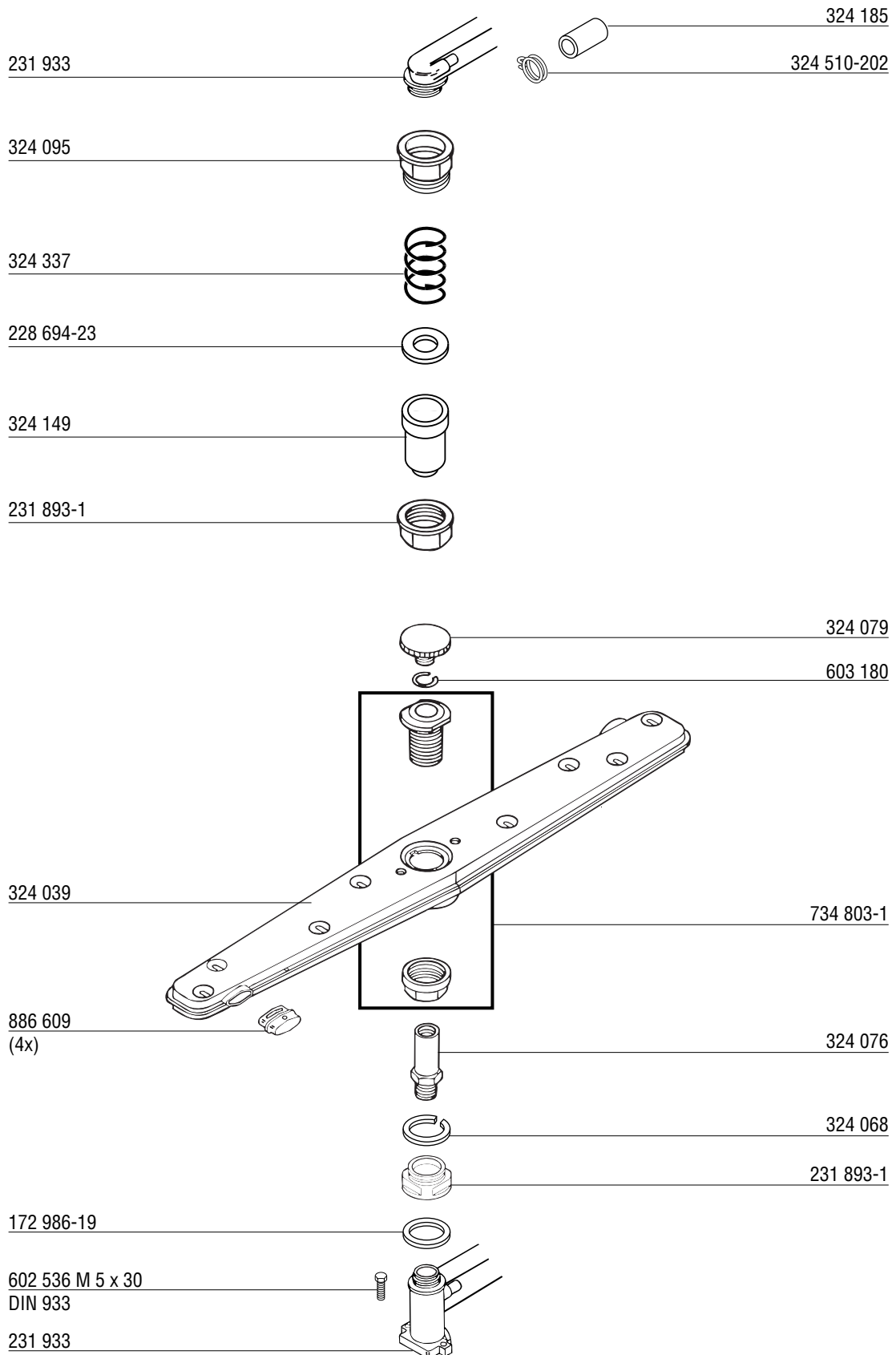
| 774 540 | |
|---------------------------|--|
| Service kit | (heater) incl. items |
| Composition du kit | (chaudière) incl. pièces |
| Umbausatz | (Durchlauferhitzer) inkl. Teile |
| 227 073-95 | 774 512-1 |
| 774 076-2 | 303 340-6 |
| 774 513-1 | 774 080-1 |
| 774 102-1 (6x) | 227 578-1 (3x) |
| 165 128-1 | 167 631-1 (3x) |

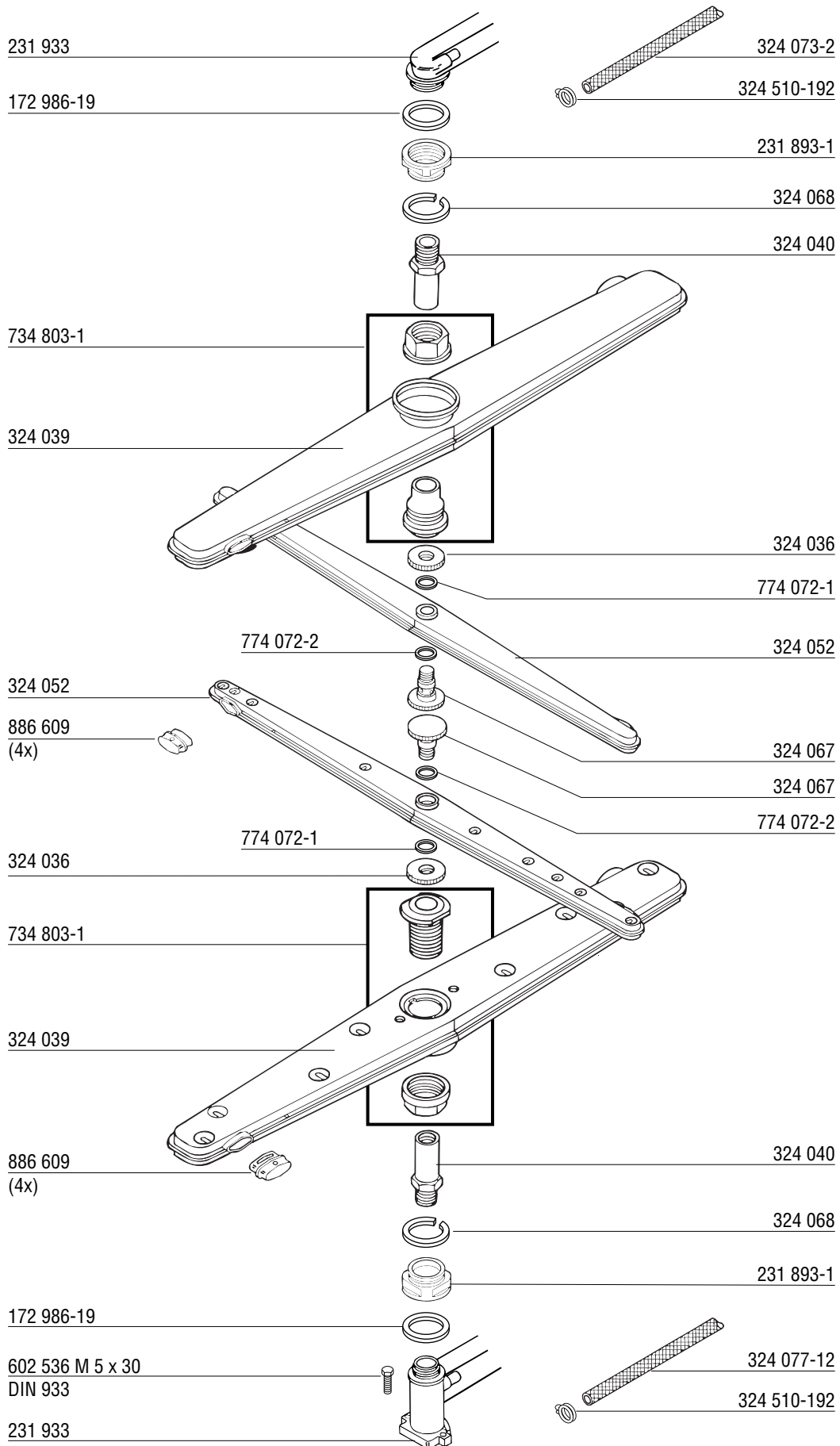


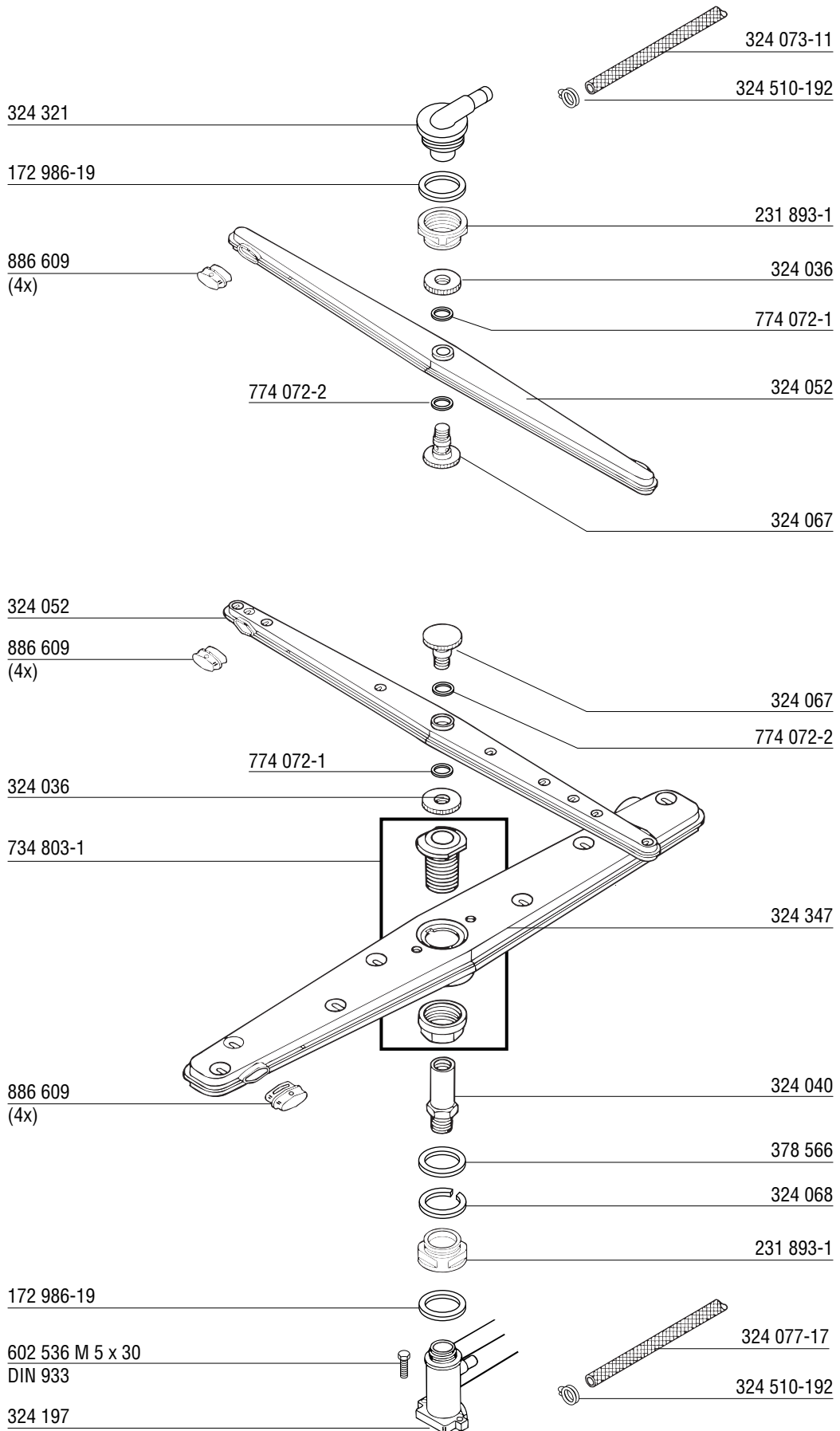


| | | | | | | | |
|------------|-----------|-------|---|------------|-----------|-------|---|
| 324 093-30 | 200-220 V | 60 Hz | 3 | 324 093-25 | 200 V | 60 Hz | 1 |
| 324 093-29 | 200-220 V | 50 Hz | 3 | 324 093-24 | 380-415 V | 50 Hz | 3 |
| 324 093-28 | 460-480 V | 60 Hz | 3 | 324 093-23 | 200-240 V | 60 Hz | 1 |
| 324 093-26 | 380-440 V | 60 Hz | 3 | 324 093-22 | 200 V | 50 Hz | 1 |
| | | | | 324 093-1 | 220-240 V | 50 Hz | 1 |









ML 106 182 FX (UK)
 ML 106 183 GX (UK)

324 158 FX
 324 233 GX

172 513

324 183

298 529-4

324 510-202

324 077-1

734 702-2

324 045

323 945-25

SD-17-42

324 510-221

324 199

165 128-3

324 097

172 513

324 384

324 510-242

602 490 M5
DIN 934

602 285 B5,3
DIN 125

378 525-1

324 088-1
142 320 (UK)

324 207-1 (0,7-6 bar)

324 207-5 (0,25-0,7 bar)

168 611-9

297 720-3 (0,7-6 bar)

324 510-242

324 077-2

602 691 M4 x 10
DIN 7985

602 489 M4
DIN 934

602 308 B4
DIN 127

324 055

324 510-202

324 269-1

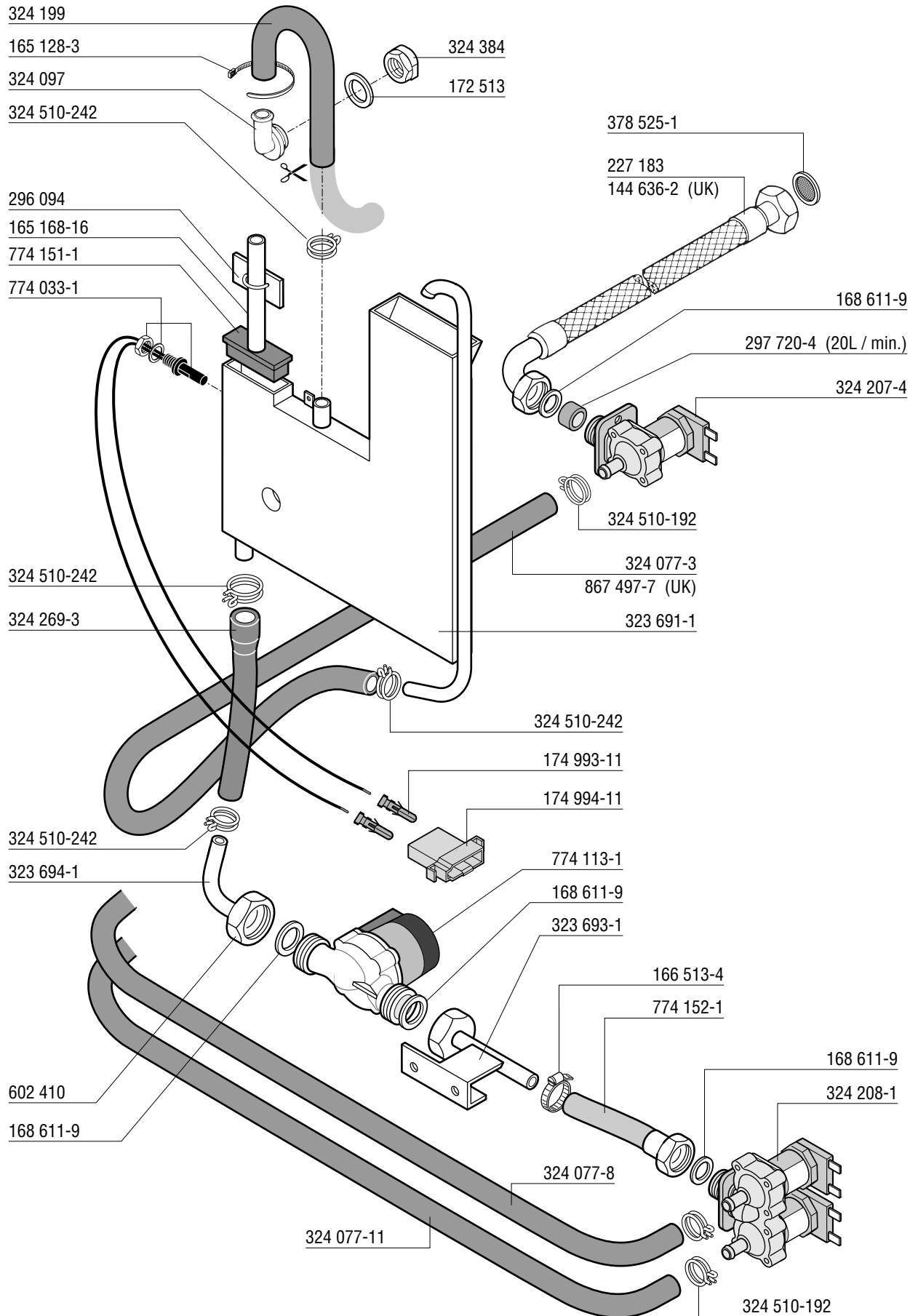
324 077-1

867 497-3 (UK)

323 785-1 220V 50Hz

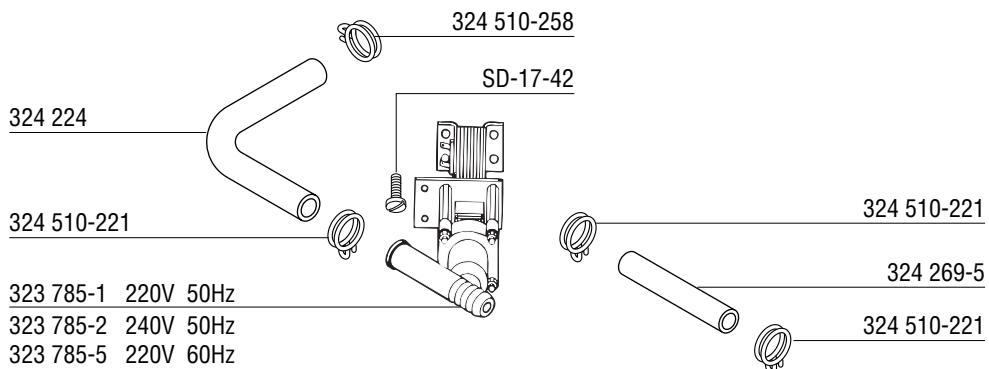
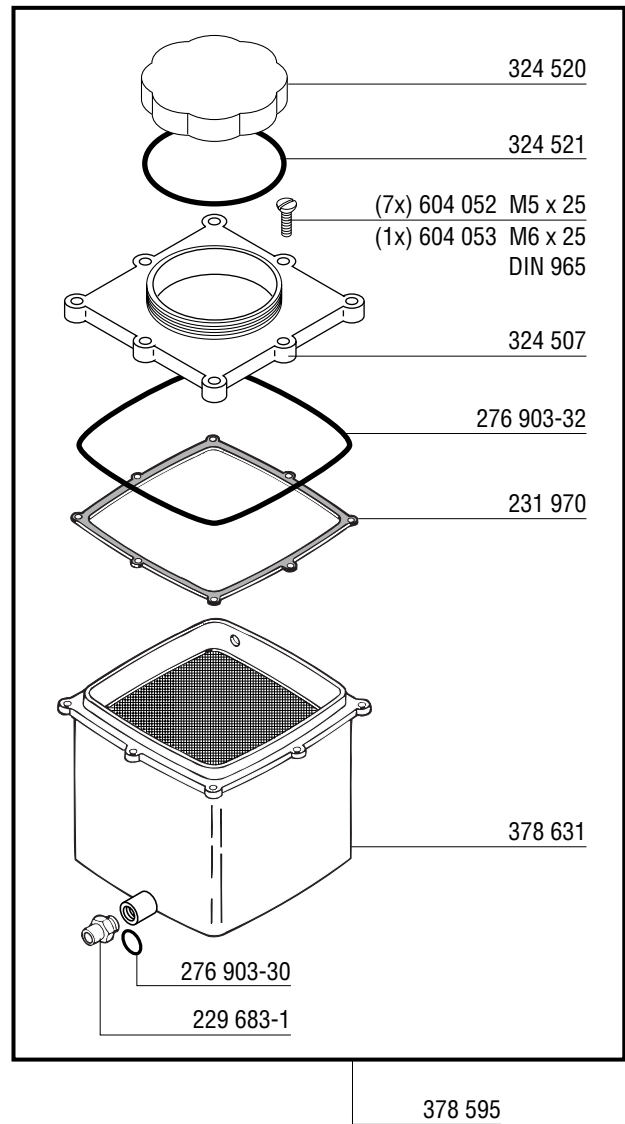
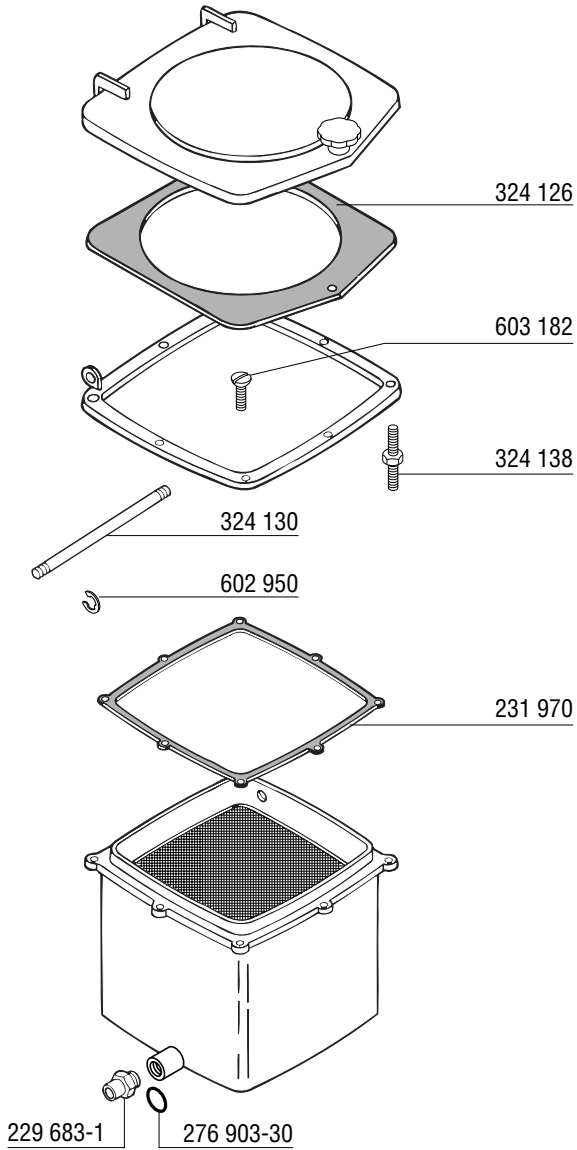
323 785-2 240V 50Hz

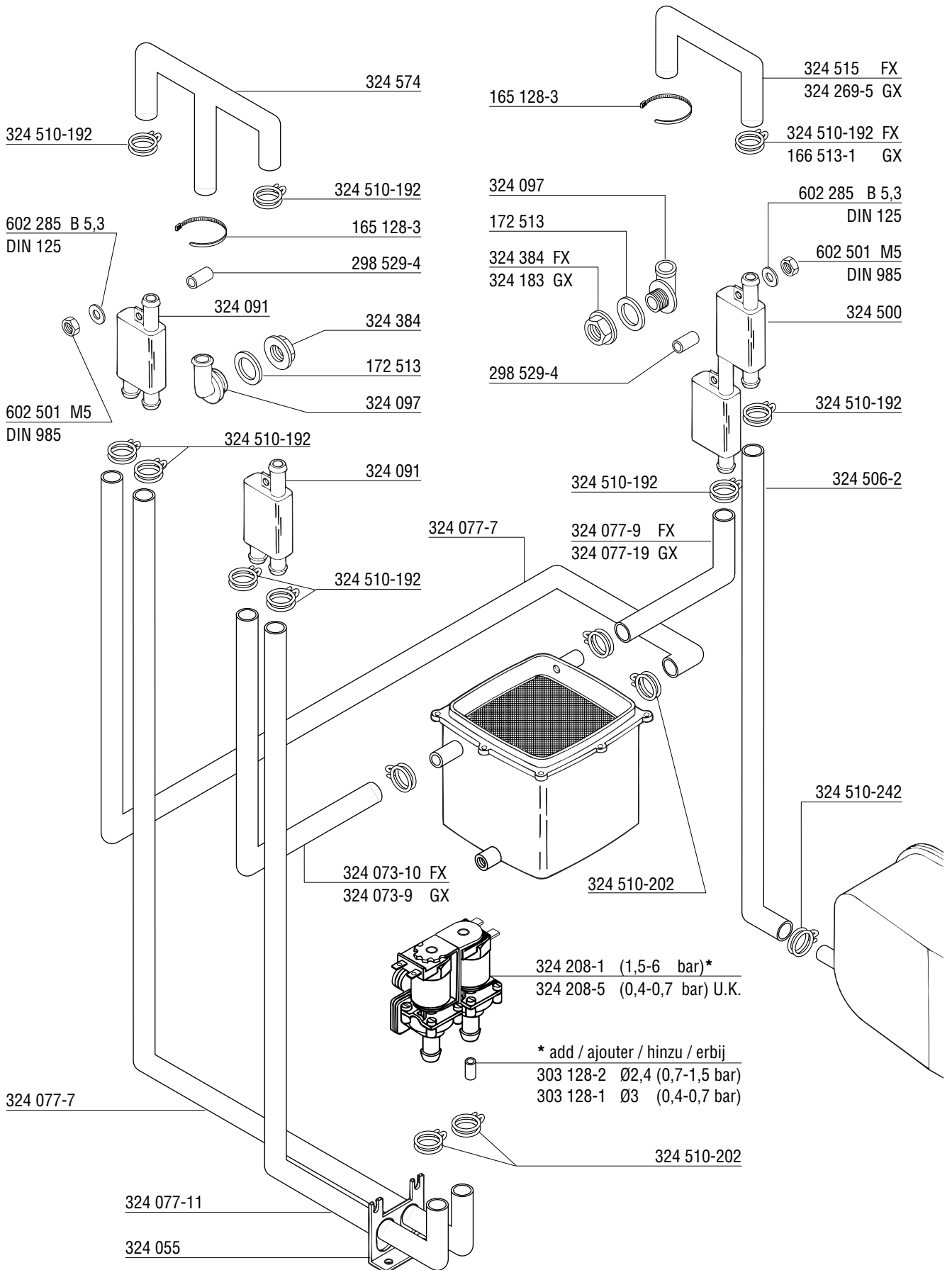
323 785-5 220V 60Hz

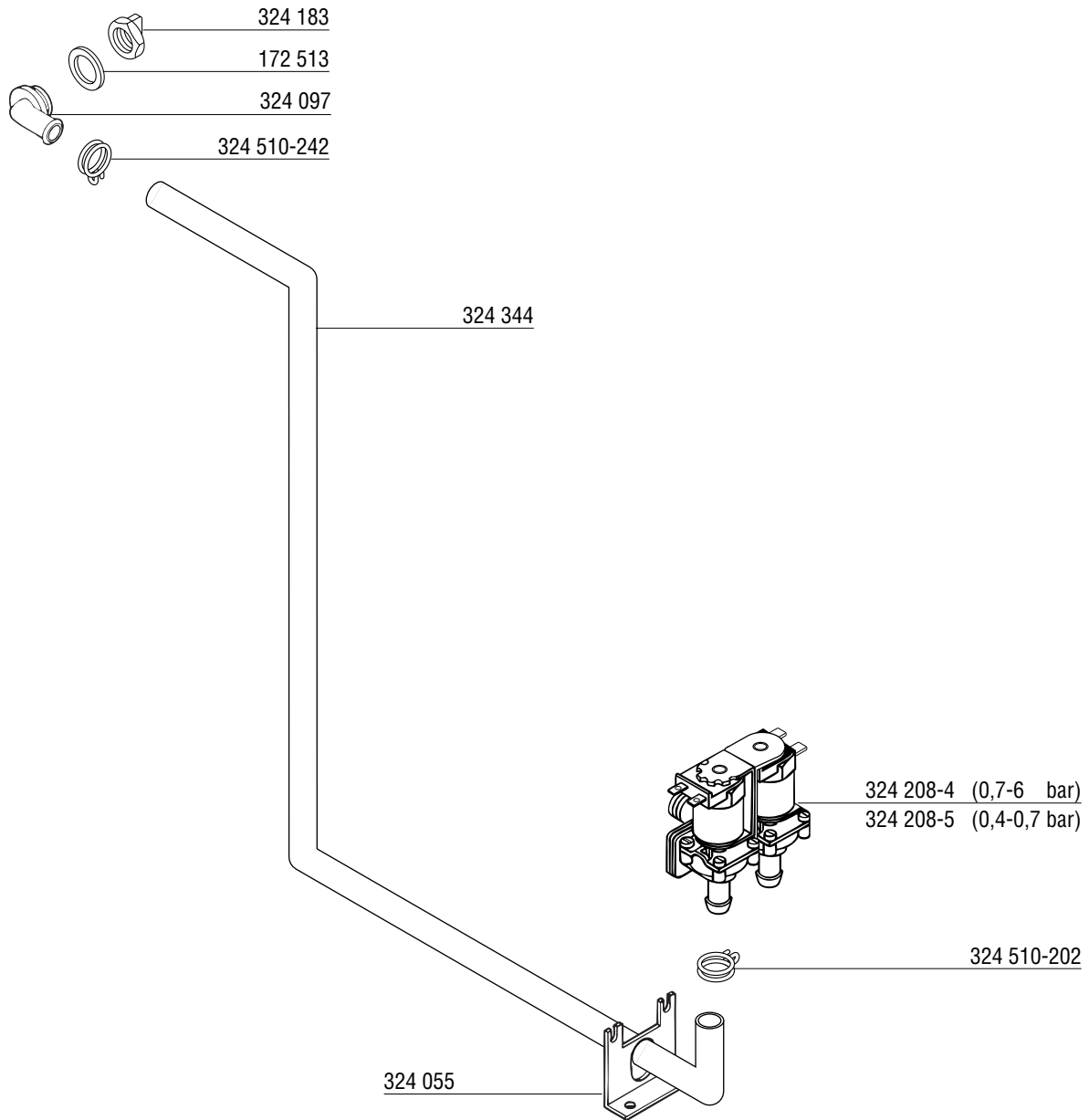


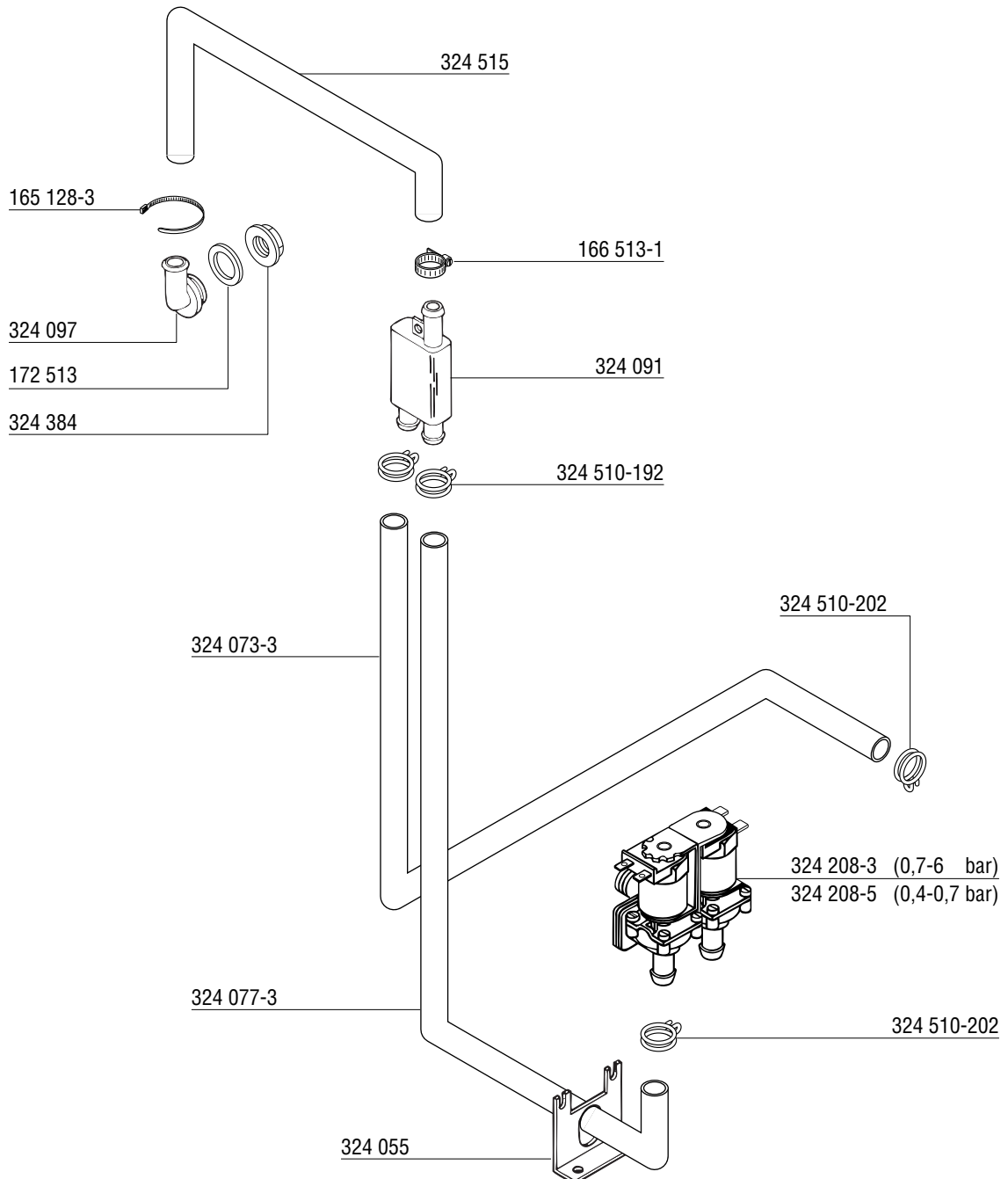
old version
ancienne version
alte Version
oud versie

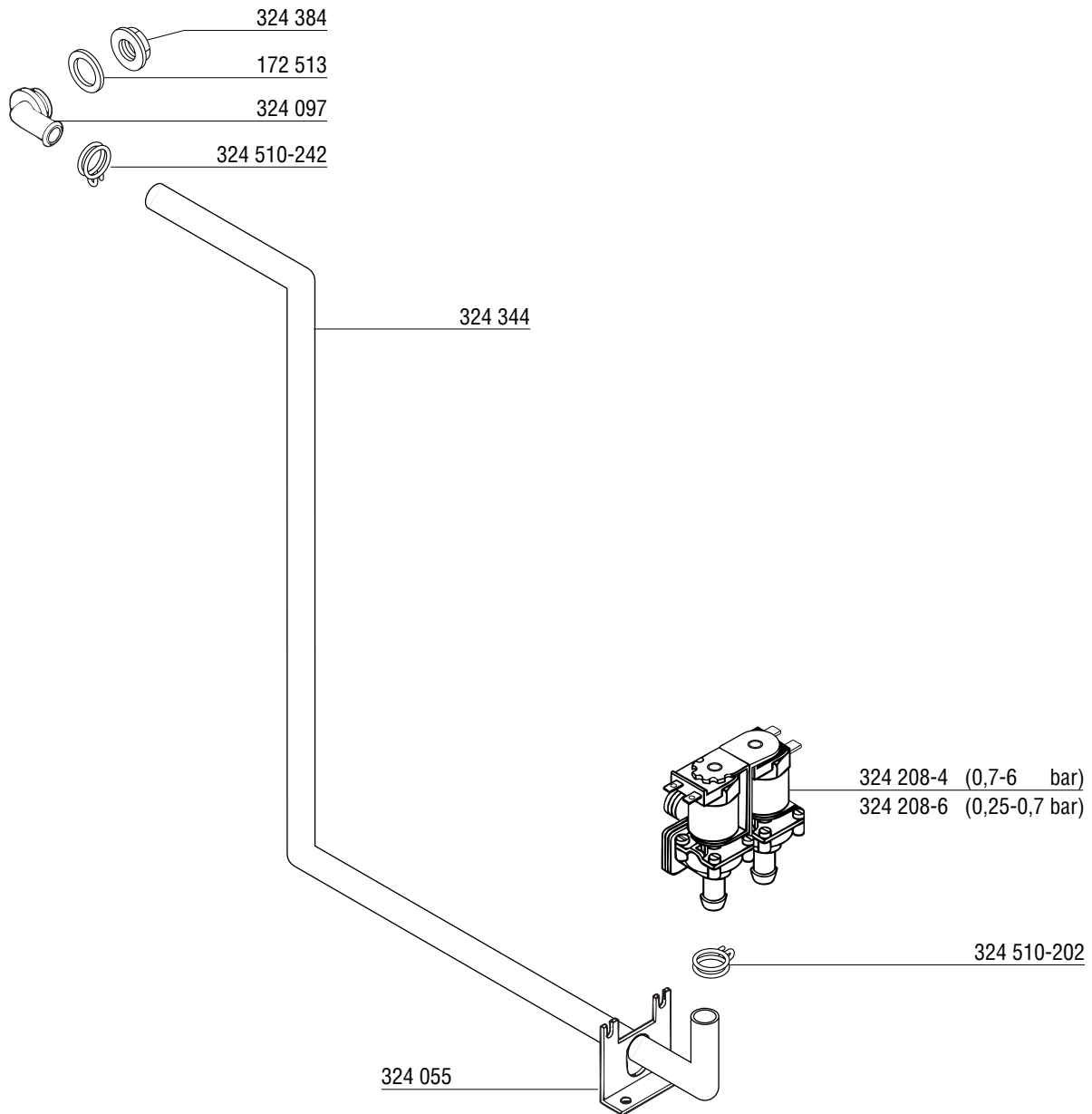
new version
nouvelle version
neue Version
nieuwe versie

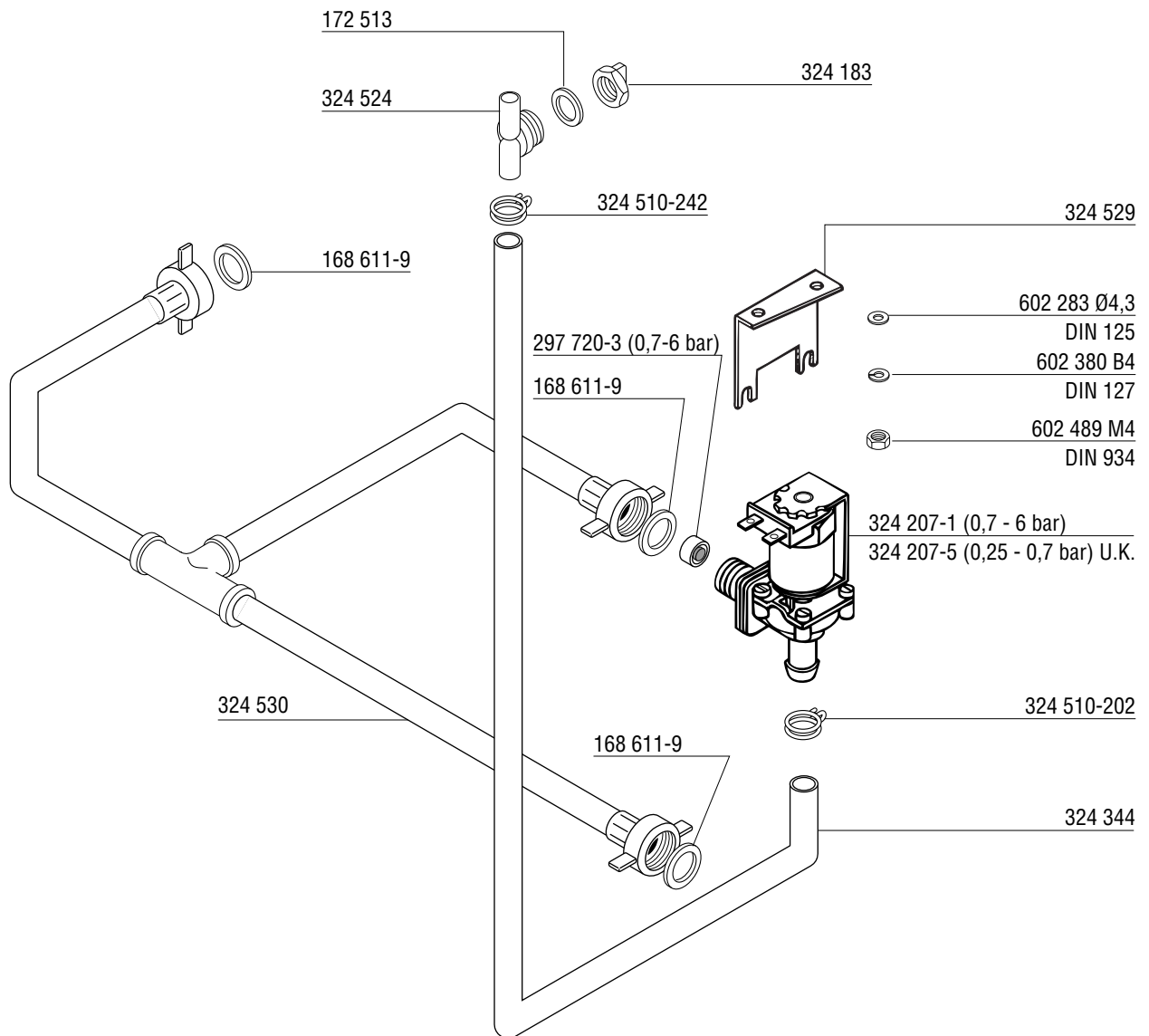


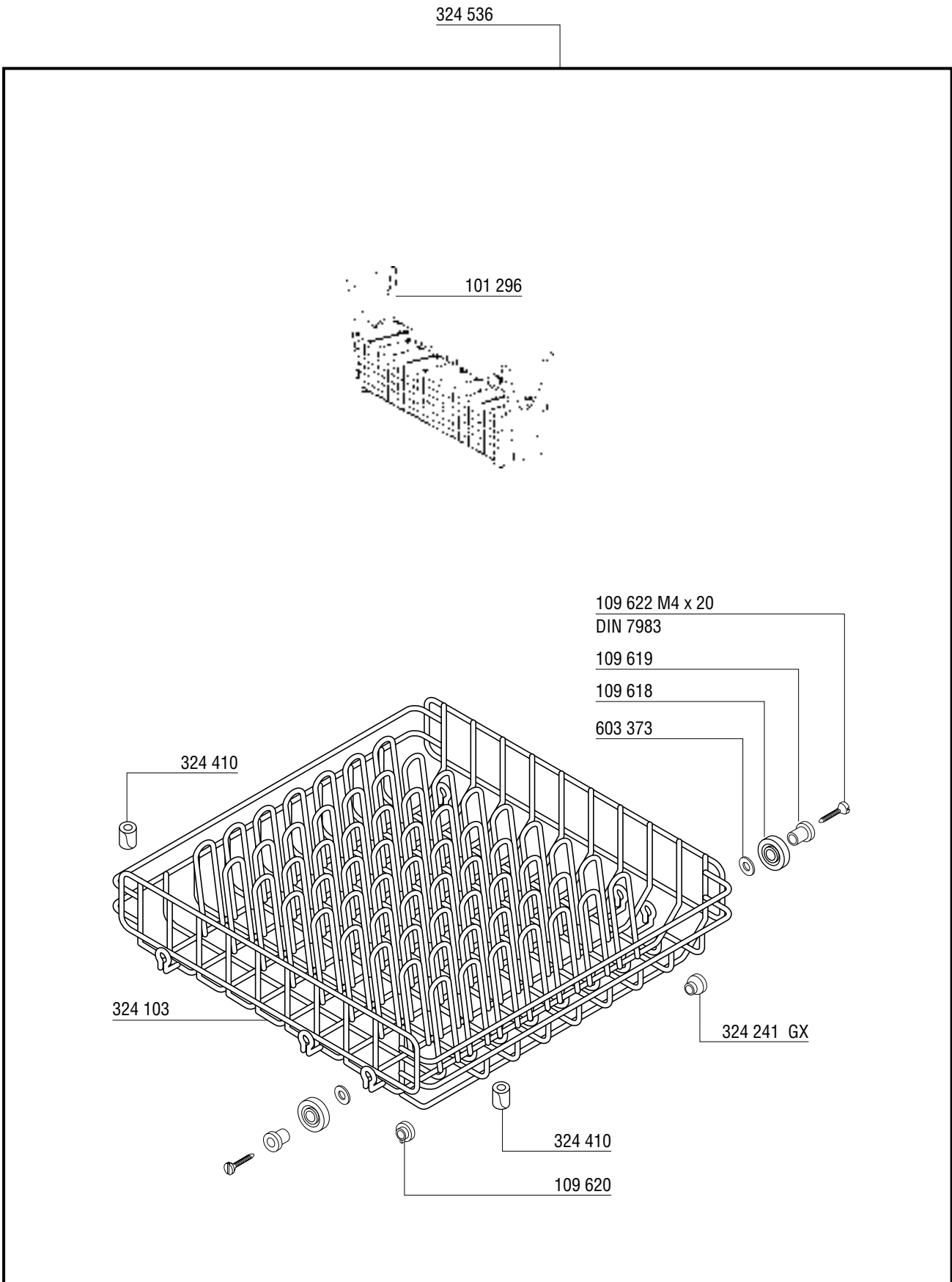


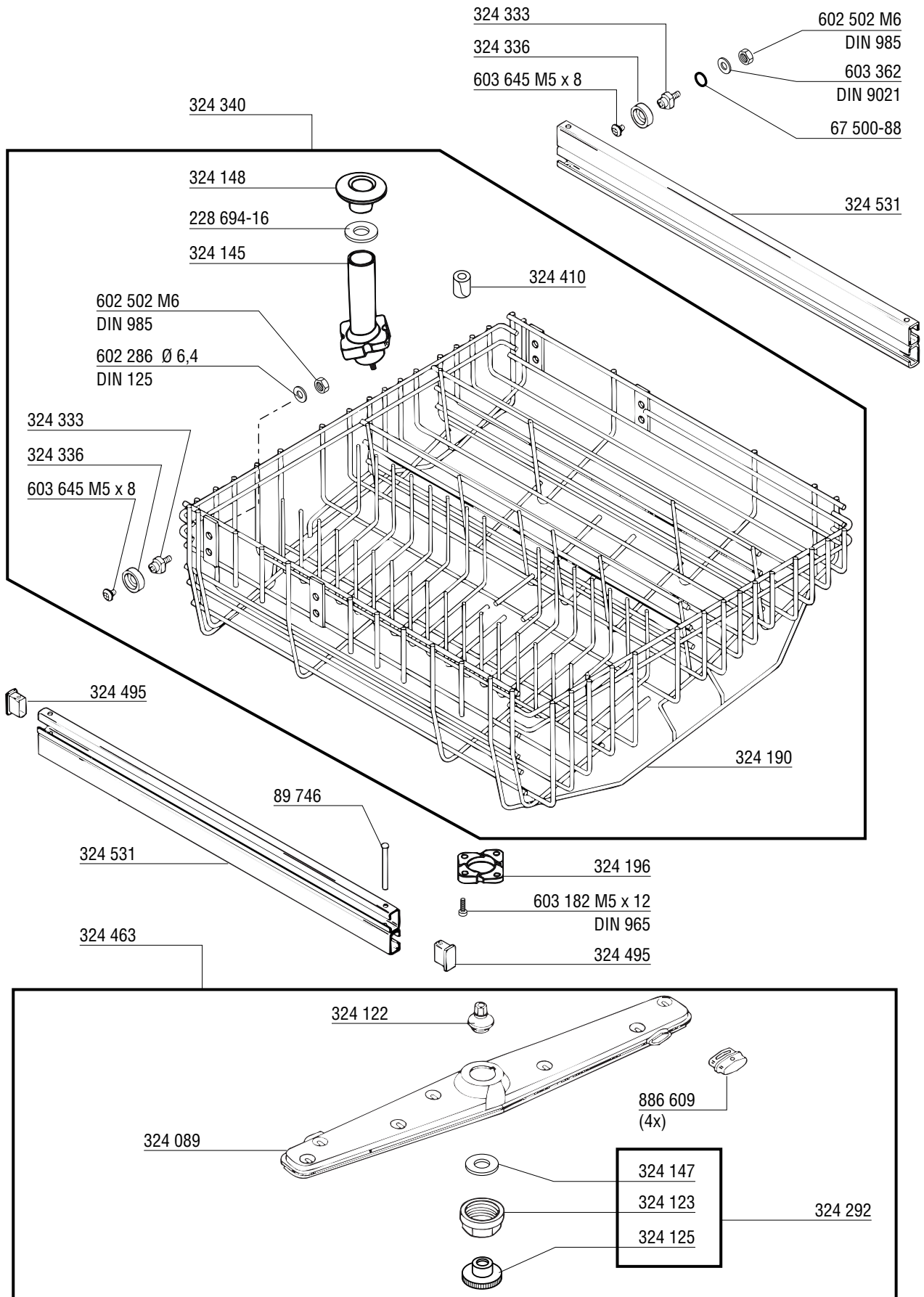






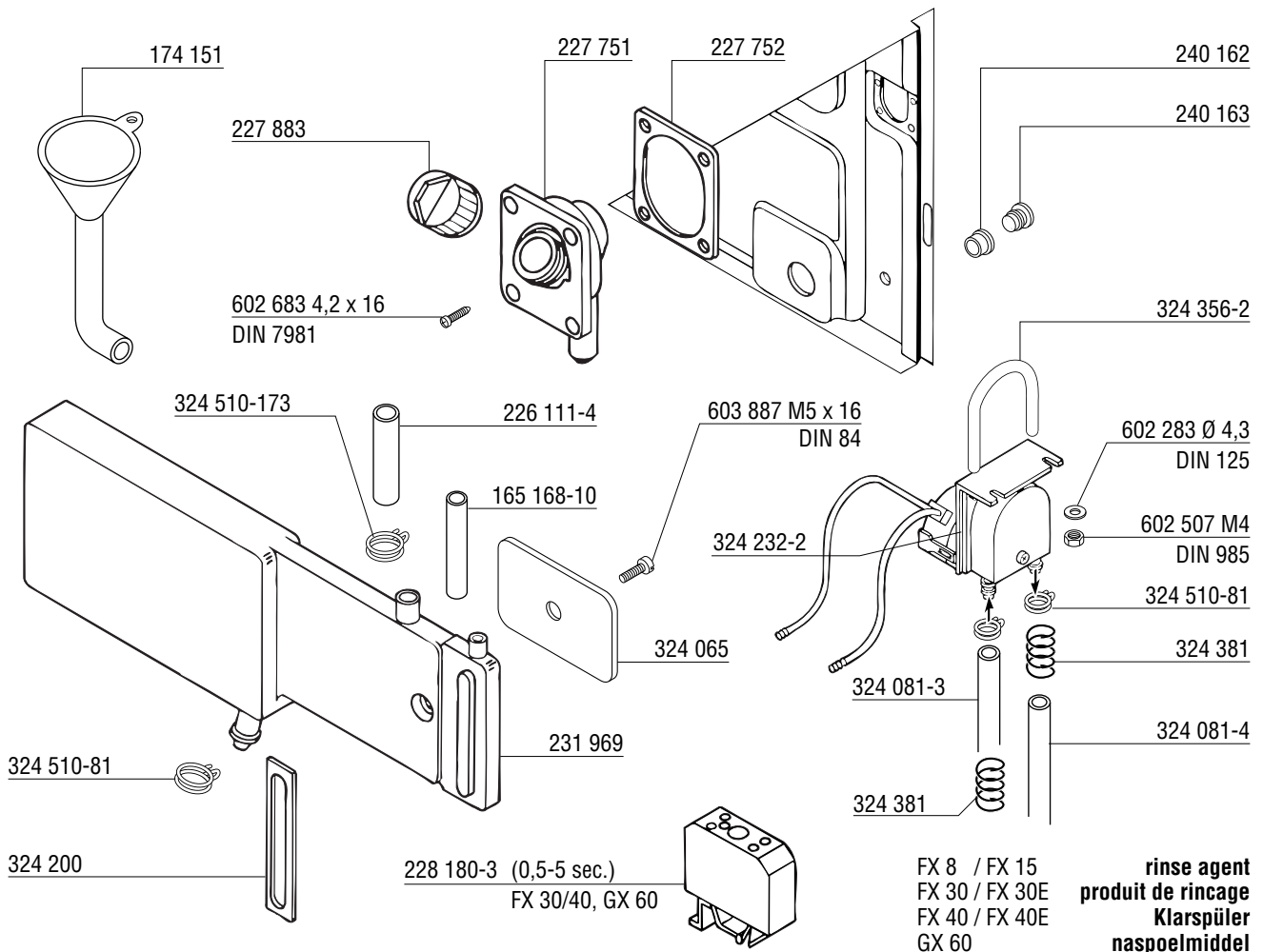
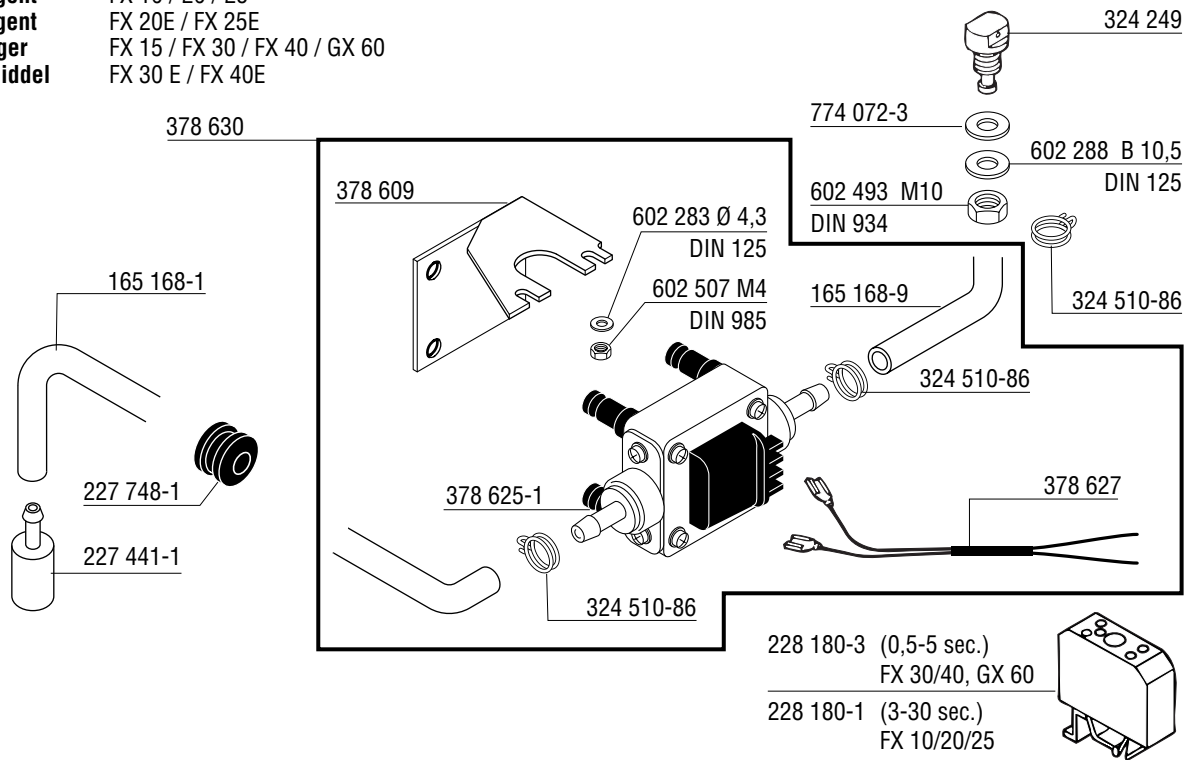






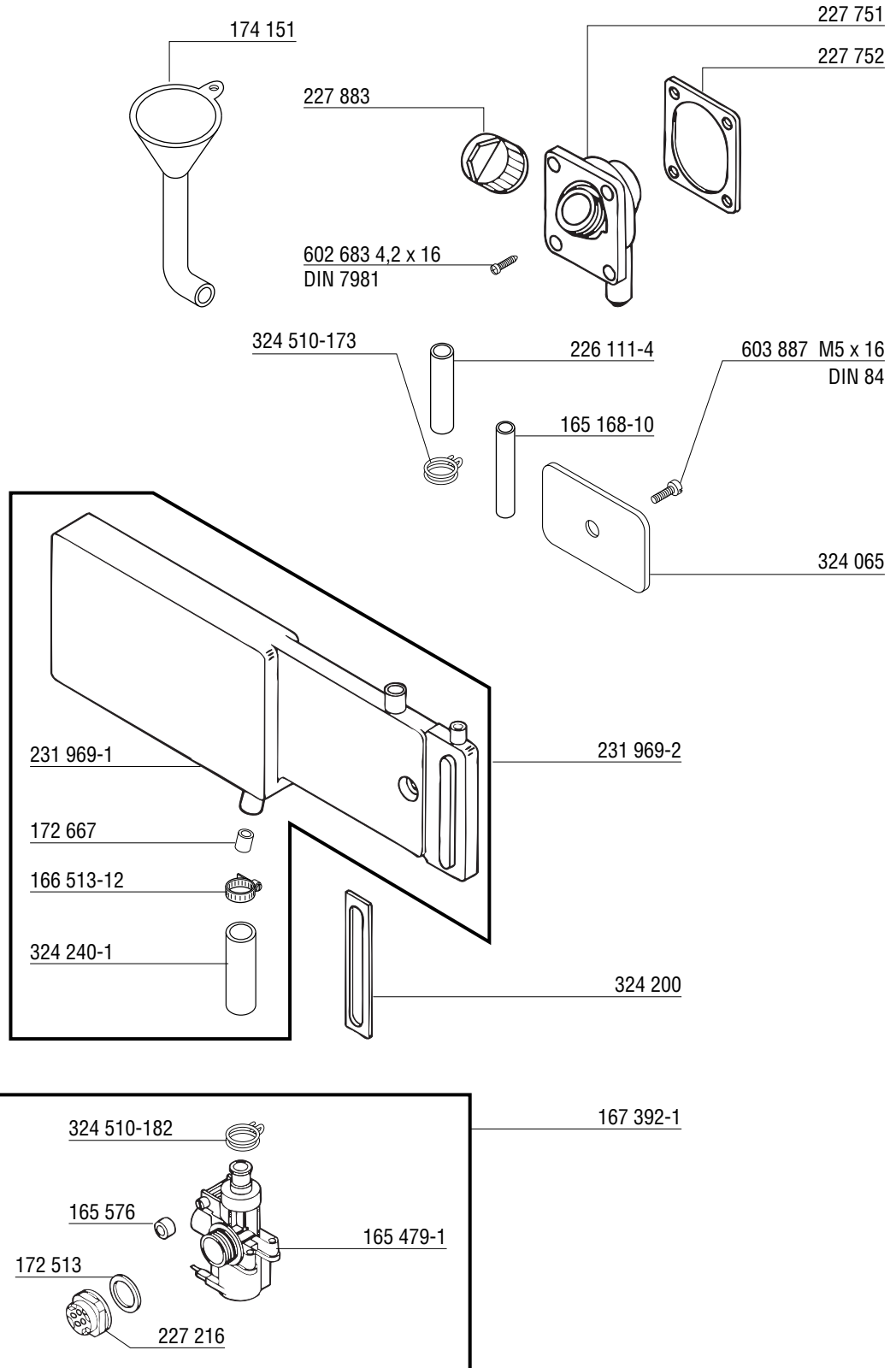
detergent
détergent
Reiniger
wasmiddel

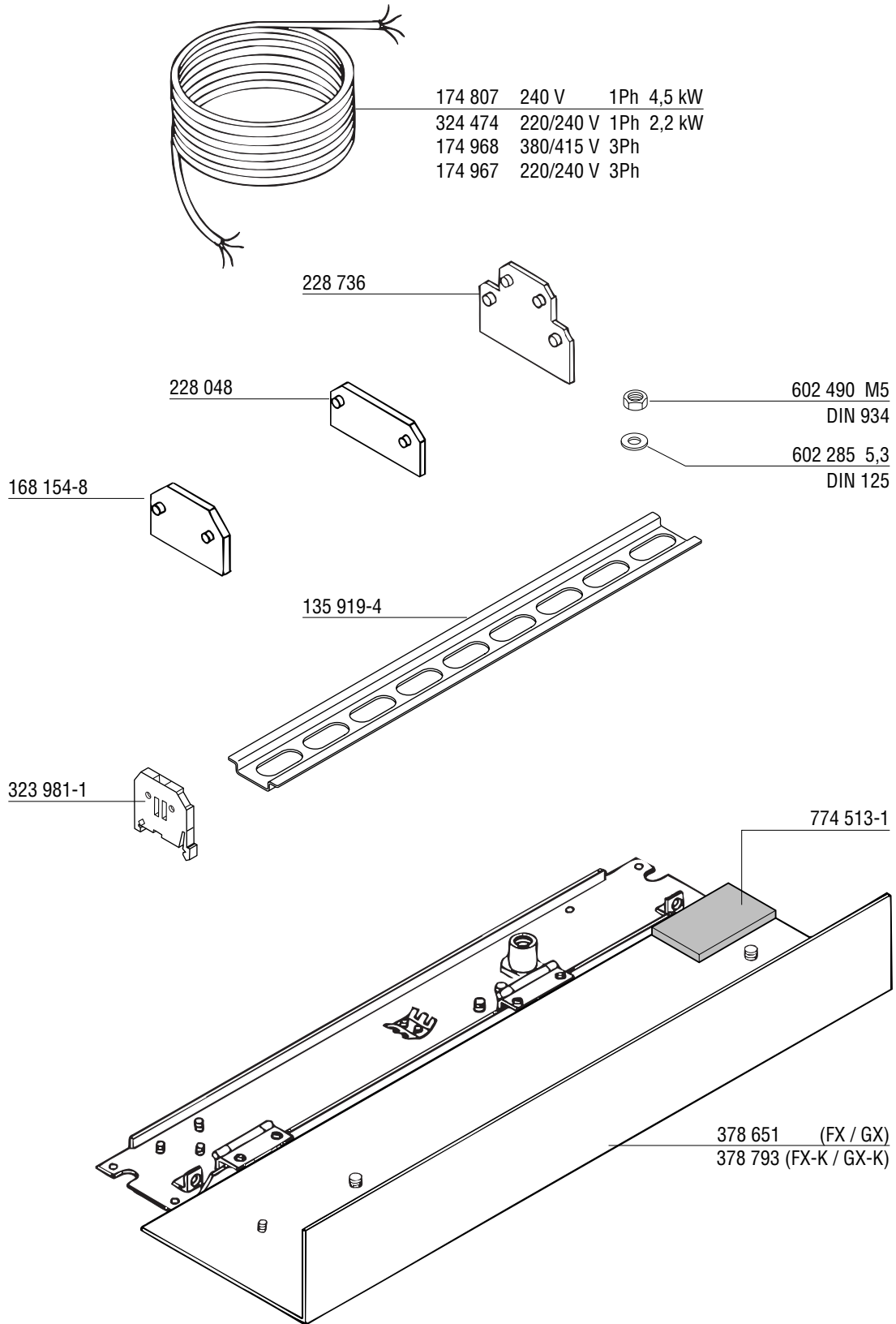
FX 10 / 20 / 25
FX 20E / FX 25E
FX 15 / FX 30 / FX 40 / GX 60
FX 30 E / FX 40E

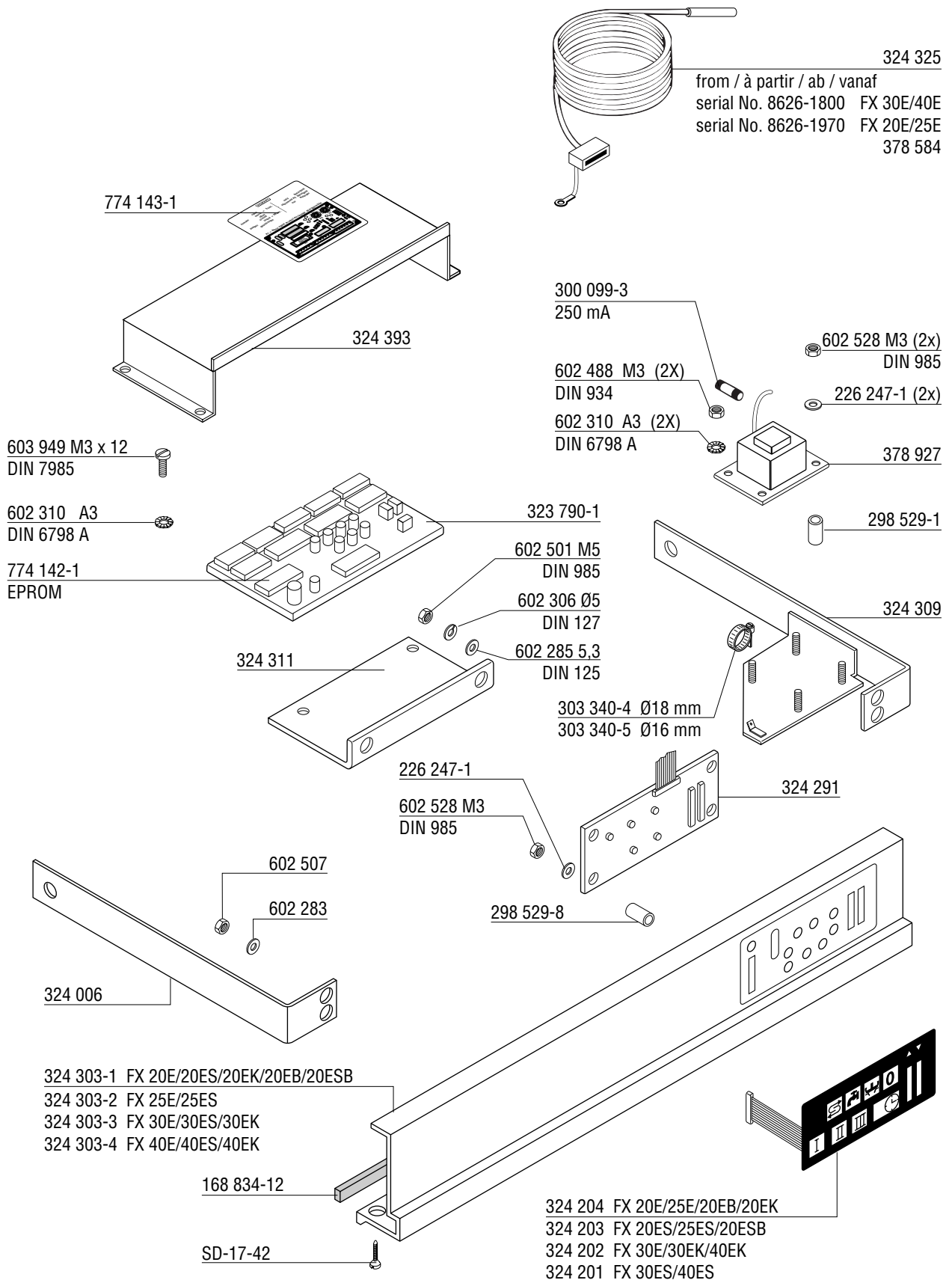


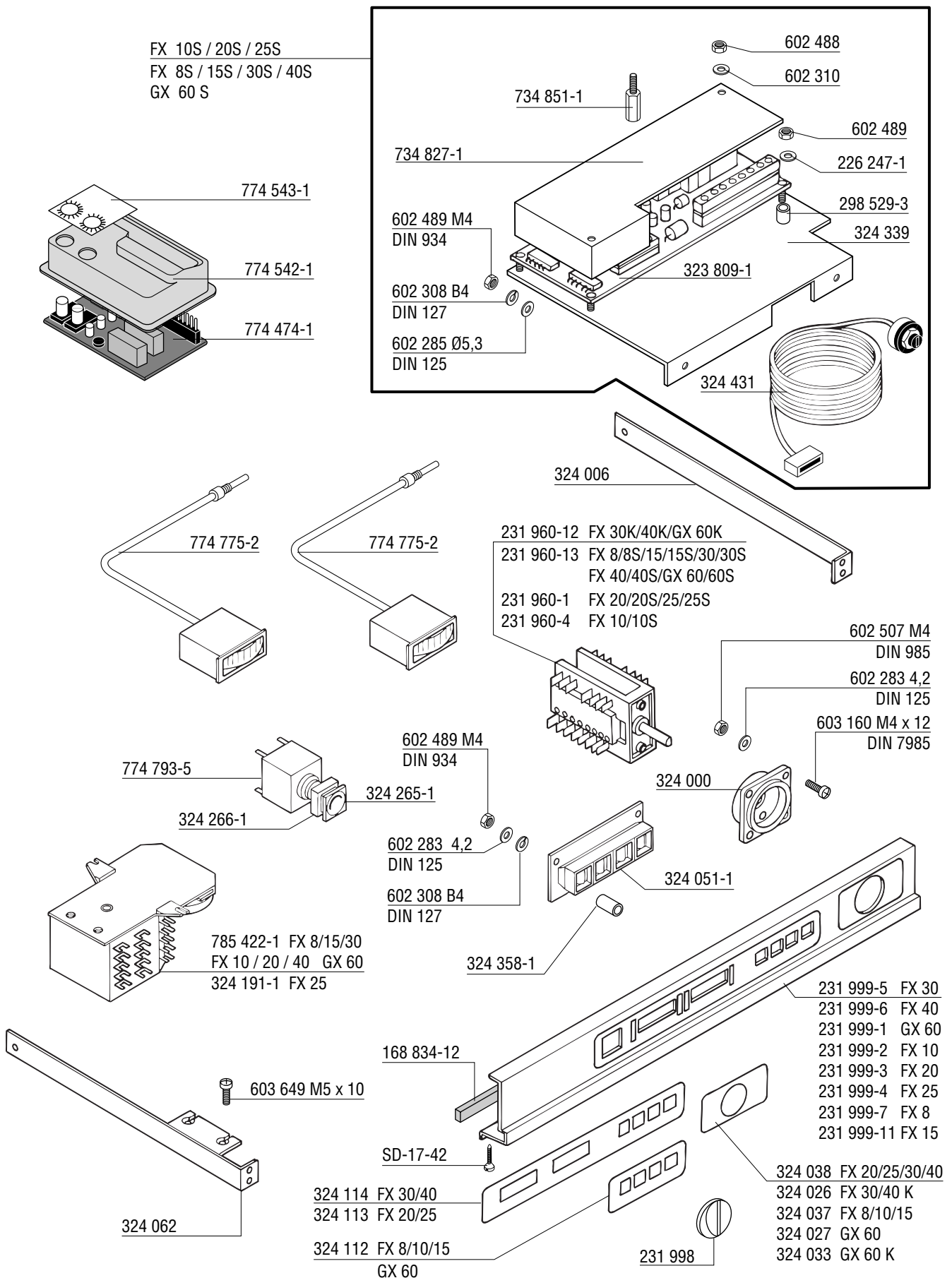
rinse agent
produit de rincage
Klarspüler
naspöelmiddel

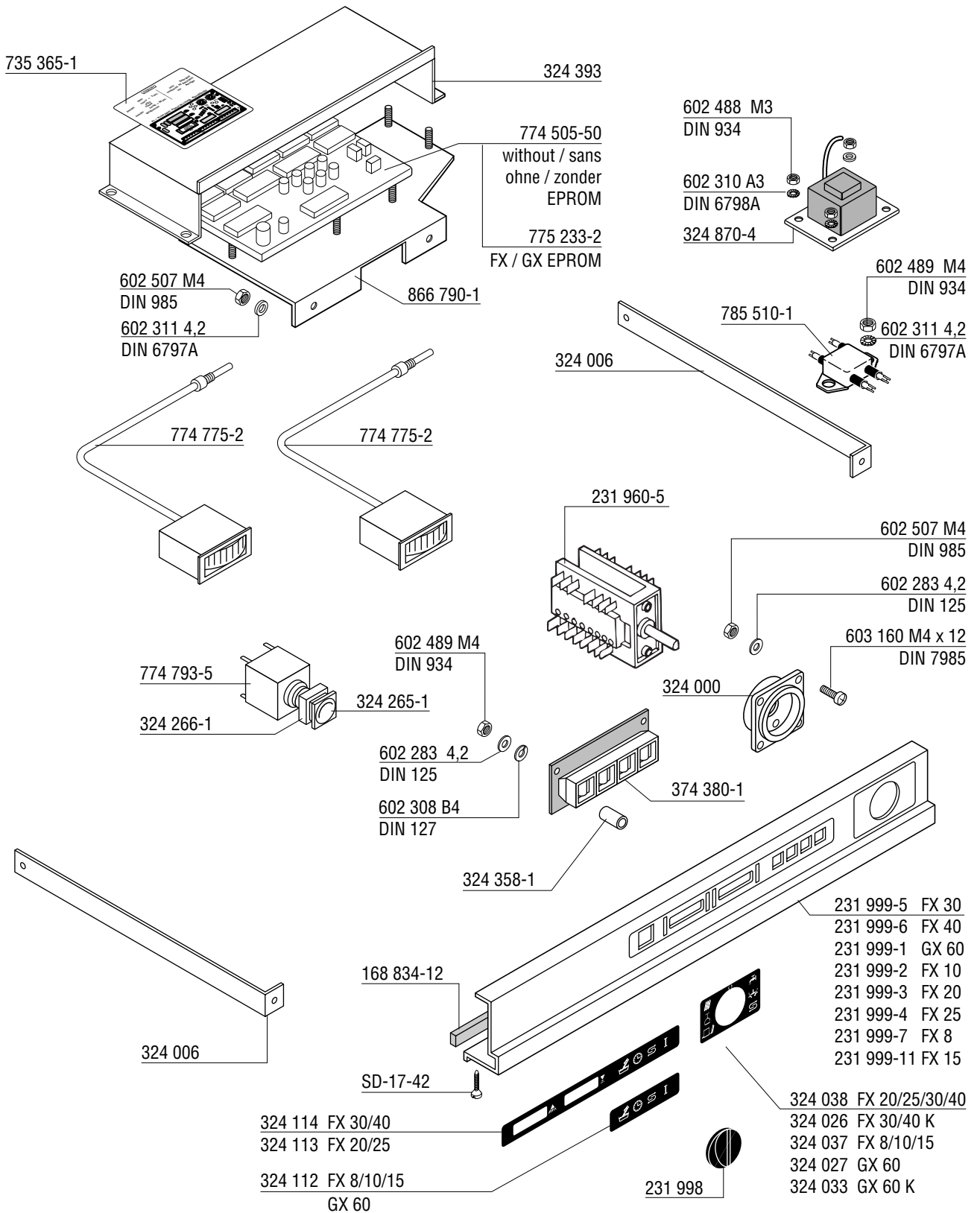
FX 10
FX 20 / FX 20E
FX 25 / FX 25E











| Part Pièce Elektroteil Elektrodeel | Symbol Symbole Symbol Symbol | Contacts Contacts Kontakte Contacte | El. connection El. connexion El. Anschluß El. aansluiting | No. No. Nr. No. |
|---|---------------------------------------|--|--|--------------------------|
| | K1 K3 K2 K5 | | 220 - 240 V 50 Hz 240 V 60 Hz | 695 507-1 |
| | | | 230 V 50 / 60 Hz | 695 507-7 |
| | K4 K8 | | 220 - 240 V 50 Hz 240 V 60 Hz | 695 537-2 |
| | | | 208 V - 220 V 60 Hz | 695 537-3 |
| | X16 | | 6 mm ² | 228 429-3 |
| | X16 | | 6 mm ² | 296 983-3 |
| | X21 F1 - F3 | | 4 mm ² | 167 938 |
| | | | 4 mm ² | 228 047 |
| | X17 | | 2,5 mm ² | 228 735-1 |
| | K6 K7 | | 3 - 30 sec. | 228 180-1 |
| | | | 0,5 - 5 sec. | 228 180-3 |
| | F1 - F3 | | 250V 6,3A | 785 290-58 |
| | T1 | | 220V - 240V 50 / 60 Hz | 167 231-1 |

Electrical parts not shown see wiring diagram.
 Pour les pièces électriques non apparentes voir schéma de câblage.
 Nicht gezeigte Elektroteile siehe Schaltplan.
 Raadpleeg het elektrisch schema voor de niet afgebeelde elektrische componenten.

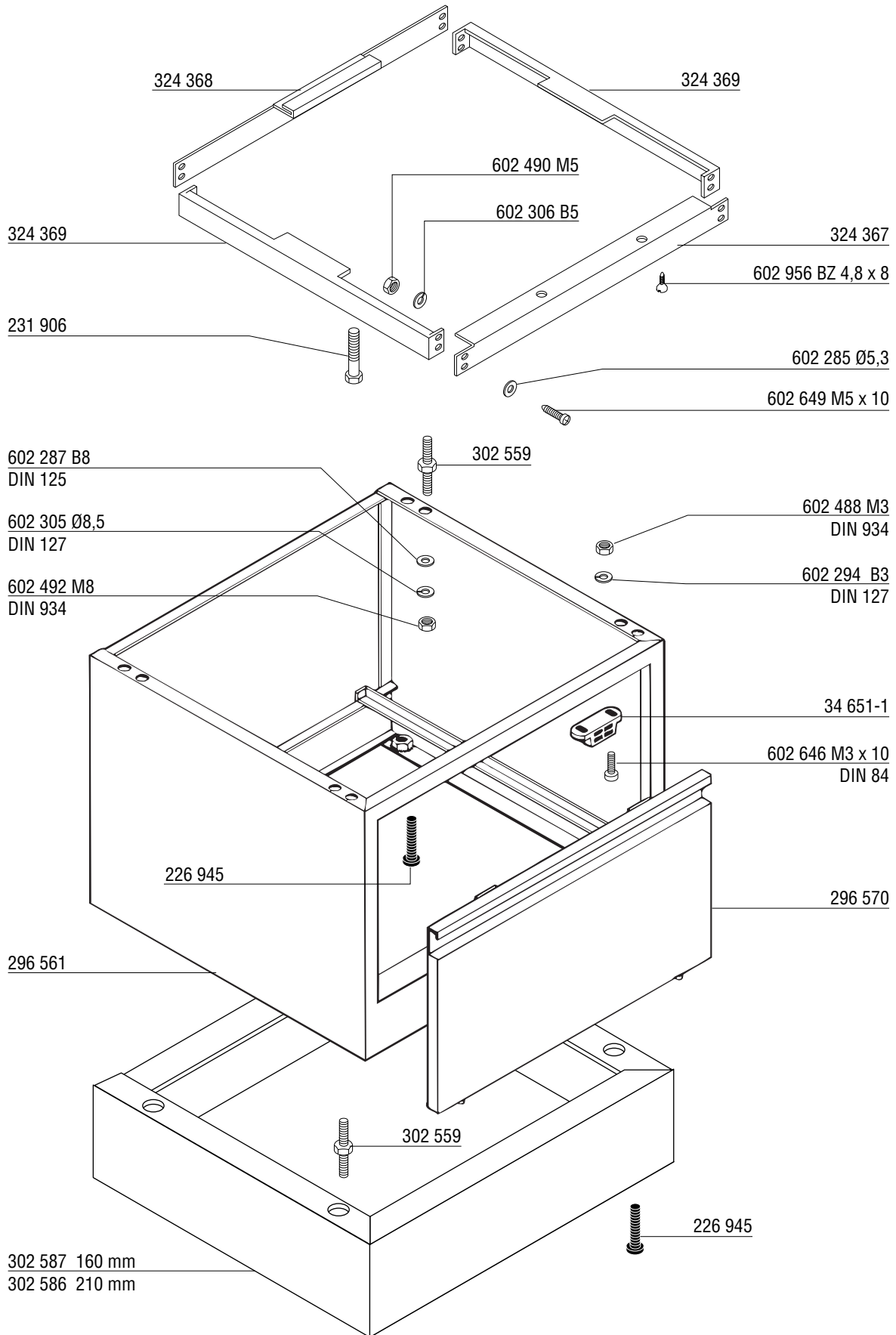
| Part Pièce Elektroteil Elektrodeel | Symbol Symbole Symbol Symbol | Contacts Contacts Kontakte Contacte | El. connection El. connexion El. Anschluß El. aansluiting | No. No. Nr. No. |
|---|---------------------------------------|--|--|--------------------------|
| | K1 K3 K2 K5 | | 220 V - 240 V 50 Hz 240 V 60 Hz | 695 507-1 |
| | | | 230 V 50 / 60 Hz | 695 507-7 |
| | X16 | | 6 mm ² | 228 429-3 |
| | X16 | | 6 mm ² | 296 983-3 |
| | X21 | | 4 mm ² | 167 938 |
| | F1 - F3 | | 4 mm ² | 228 047 |
| | X17 | | 2,5 mm ² | 785 508-1 FX / GX |
| | | | | 228 735-1 FX-E |
| | F1 - F3 | | 250V 6,3A | 785 290-58 |
| | T1 | | 220V - 240V 50 / 60 Hz | 167 231-1 |

Electrical parts not shown see wiring diagram.

Pour les pièces électriques non apparentes voir schéma de câblage.

Nicht gezeigte Elektroteile siehe Schaltplan.

Raadpleeg het elektrisch schema voor de niet afgebeelde elektrische componenten.



As continued product improvement is a policy of HOBART, specifications are subject to change without notice.

Ce catalogue n'est pas contractuel. HOBART se réserve le droit, et sans préavis, d'apporter toutes modifications ou améliorations à ses matériels.

HOBART behält sich das Recht vor, an allen Produkten technische Änderungen und Verbesserungen ohne Ankündigung vorzunehmen.

Voortdurende produktverbetering vormt een wezenlijk onderdeel van het beleid van HOBART. Specificaties kunnen zonder kennisgeving gewijzigd worden.